

UNIVERSITY OF
DELAWARE

OLLI News

SEPTEMBER 2025

Say Hello to Dr. Caitlin McGeever

New OLLI-W Program Coordinator

Fred Hosier

OLLI Wilmington's new Program Coordinator Dr. Caitlin McGeever looks forward to meeting lots of students and instructors as the Fall 2025 semester starts.

But you might not find her in her office.

One of the things that struck Caitlin as she was interviewing for the position was how happy and sociable all the people she met were. "It's not like sitting in a cubicle all day and looking at a screen," Caitlin said. "You get to talk to people, make social connections and get to know people."

Caitlin started in July during OLLI-W's four-week summer semester which helped her get to know how everything works. "I'm better prepared for Fall when it's really busy and there's more people on-site," Caitlin said. "I've been able to meet a bunch of people, so there will be some familiar faces (in the Fall). I think it was a good transition point."

Up to Caitlin's arrival, Jenna Cole was handling online and in-person program coordination. Jenna's focus will now be online courses.

Lifelong Learning is a Draw

What interested Caitlin in coming to OLLI-W?

"There's something very invigorating about always being around



people who are trying to learn more," Caitlin said. She thought being Program Coordinator at OLLI-W was "a fantastic opportunity."

What will she be doing?

Caitlin is the point of contact for all instructors for in-person courses. And she'll be working on adding even more instructors to the great group already at OLLI-W.

If you're interested in being an instructor, get in touch with Caitlin.

"Everyone has something to share and something to learn," Caitlin said. She can talk to potential instructors about presenting to larger groups and how to get started on a syllabus. "Anything people have

an interest in, or something you did in your career or maybe one of your hobbies ... something you want to learn with others by your side. Let's do it. Let's give it a shot," Caitlin said.

When interviewing for the position, Caitlin read previous OLLI-W course catalogs. "I thought, 'Oh my gosh, this keeps going and going,'" Caitlin said. "I am incredibly impressed with the extent and breadth of what is being offered."

Caitlin is also looking to expand those offerings. One idea Caitlin has: Offering courses, for example History, taught in languages other than English, such as French or Spanish. This would provide a progression for people taking OLLI classes to learn another language.

Partnering with Community

Partnerships with other organizations are a key to expansion, according to Caitlin.

"We have partnerships, such as with Center for Creative Arts that provides some of the jewelry courses," Caitlin notes. "The purpose is to open some of these other locations to members to people who can provide the expertise. They have that experience to help show the breadth of what's in the area."

Continued on page 7

Welcome from Council Chair Rose Greer

It is with great pleasure and enthusiasm that I welcome you to the Fall 2025 semester of Lifelong Learning at the University of Delaware OLLI. This semester continues to promise vibrant learning opportunities, inspiring connections, and a dynamic community where curiosity thrives. Whether exploring a single course or immersing yourself in a variety of in-person and online activities, exciting opportunities and fresh perspectives spark new ideas as we celebrate the pure joy of learning.



OLLI operates under the governing body of the Council. As such, we follow a Mission and a Vision, which provide clarity, focus, and direction to guide decision making and strategic planning in order to remain focused on common goals.

Mission: "To provide opportunities for intellectual development, cultural stimulation, personal growth and social interaction for people 50 years of age and older in an educational cooperative run by its members who volunteer their time and talents. The program is centered on classes developed and led by fellow members."

Vision: "To be a premier educational program composed of a diverse membership of people who come together to be intellectually, culturally, and socially stimulated in an educational atmosphere. Through its programs, OLLI enhances, enables, and extends the quality of life of its members."

In addition to paying membership fees set by Council, as OLLI members we support its Mission and Vision. We demonstrate this by teaching classes, doing committee work, and providing financial and other support. To that end, we rely on the en-

ergy and dedication of our member volunteers to make a difference.

We are always in need of volunteers. Volunteering can be just a small amount of your time but can have a great impact. Whether you can spare a few minutes or hours or commit to a regular schedule, it all helps. You'll meet new people, learn new skills, and play a crucial role in helping our community thrive. No experience is necessary – just enthu-

siasm and a commitment to help.

I read somewhere that volunteerism is the voice of the people put into action. These actions shape and mold the present into a future which we can be proud of.

OLLI is not just an organization – it is a community. And volunteerism builds that community. Volunteerism is the ultimate exercise in democracy. When you volunteer, you vote everyday about the kind of community you want.

We can't wait to welcome you and work with you!

Listed below are just some of the areas open to you. Let us know how you'd like to volunteer.

Art

- Plan, organize, and conduct visual art activities and support fine arts programs by:
- Helping to schedule and arrange exhibits.
- Maintaining, stocking, and cleaning the art rooms and art closet.
- Communicating art instructional needs to Council and staff.

Continued on page 3

Continued from page 2

Book Sale

This two-week event offers multiple opportunities including:

- Managing volunteer recruitment.
- Marketing for donation week and sale week.
- Receiving book donations, sorting, setting up.
- Assisting at the sale as floaters or cashiers.
- Organizing for the disposition of unsold books.

Computer Coordination

- Maintaining OLLI computers used for instruction in computer classes.
- Recommending upgrades for computers and software (in person and remote).

Curriculum Committee

The Curriculum Committee consists of volunteers who serve as Area Coordinators. Duties include:

- Approving courses and extracurricular activities.
- Maintaining contact with volunteer instructors.
- Recruiting instructors and providing information and support for both in-person and online classes.

Specific Requirements:

- Demonstrated knowledge of the content area they represent and experience teaching at OLLI.
- Must be a member of OLLI during service on the Curriculum Committee.

Council

Follows a specific nomination/approval process.

Distance Viewing

- Recording selected courses to be made available to OLLI members and other locations as needed.
- Processing recorded courses into the UD database for on-demand usage and as a repository for the digital library.

Facilities/Equipment/Safety

Working with OLLI Director on issues relating to improvement, safety, maintenance for Arsht Hall, surrounding property, building equipment, and member safety (in person and remote).

Finance

- Advising and assisting the Finance Officer serving on OLLI's Council.
- Preparing the budget in coordination with UD.

Specific Qualifications:

- Business degree or equivalent work experience.
- Familiarity with Microsoft Excel.
- Nomination by Finance Chair and Council Chair.

Fundraising

Seeking funding for OLLI through annual gifts, endowments, qualified charitable contributions, bequests, and corporate and foundation grants (in person and remote).

Marketing

The primary goal is to increase and retain membership.

This involves promoting our program to our target audience in order to create an inviting experience for them. This includes making physical, emotional and educational connections with our target audience throughout their time spent at OLLI.

Music

- Addressing logistical needs of "Music Participation" classes.
- Coordinating musical performances in Arsht Hall.
- Helping acquire needed instruments and equipment.
- Musicians/singers perform at area locations/events as part of OLLI outreach.

Continued on page 4

Continued from page 3

New Member Relations/Volunteer Engagement

Welcome/integrate new members into the OLLI community by:

- “Welcome Aboard” program.
- Buddy program.
- New Members event.
- Volunteer recognition events.

Newsletter

Develop and publish an in-house newsletter for all OLLI members.

Open House

Act as a guide for potential new members, assist with refreshments, assist with cleanup, provide music, man an information table.

Reception Desk

Act as initial contact for members during fall and spring semesters by manning the reception desk, greeting members and answering questions, and directing members to where they need to go.

Two volunteers are needed in the lobby the first month of each semester during lunch times.

Social

Provide OLLI members with a variety of social events by:

- Recruiting refreshment donations, hosts and servers for these events.
- Exploring new opportunities for outside events or programs.

Travel

Consider and approve trips sponsored by outside travel providers in coordination with OLLI-DE Administration, including:

- Promoting travel opportunities to members.
- Arranging for and accompanying members on OLLI sponsored day trips.

UD Collaboration

Make connections/establish relationships between OLLI and the University of Delaware by:

- Promoting UD facilities, programs, and resources for OLLI membership and the experience/expertise of OLLI members to the University.

Wireless Device Registration

Assist members with registering their mobile devices to access UD EduRoam, Wi-Fi at Arsht Hall and other educational facilities.

Welcome Aboard

Welcome and acclimate new members.

By bringing individuals from diverse backgrounds together to work towards common goals, volunteering fosters a sense of unity and shared purpose.

Volunteering projects often require teamwork, collaboration, and communication. These interactions help build trust among community members. As trust grows, so does the willingness to cooperate on future initiatives, creating a positive cycle of community engagement. Volunteerism is at the very core of being human. No one has made it through life without the help of someone.

Please consider joining us as a volunteer in whatever capacity you are most interested. Meet new people. Gain a sense of pride and achievement as we all contribute to making OLLI the place that we love.

For volunteer sign-up form, go to <https://forms.gle/pynB84cYgx8YuycQ7> or scan QR code.



Volunteer Spotlight

Jean Youkers

Rolf Eriksen

Rolf Eriksen's lifelong appreciation of art led to his enthusiastic creation of art projects when he joined OLLI-W in 2010. Though he had a grandmother who was an impressionist painter in the 1800s, he had no previous art training. He began by taking sculpture and oil painting classes. Within a few years, he became an instructor in ceramic techniques. Rolf has a passion for art and for helping others to become successful artists.



Currently, Rolf teaches *Abstract Art* online, along with Eric Sallee. He teaches *Ceramic Techniques for All* and two ceramic workshops. He noted that there are many other instructors in the program, including Jeffrey Chambers, John Dempsey, Susan Peo, Joseph Germano, Svetlana Lisanti, Lynne Seligman, and Linda Simon. "It's a team effort," he says.

The instructors offer individual attention to class members, who are working at different levels. Some are completely new to artwork, while others are returning to an interest they haven't pursued since high school.

"The team provides support to make students successful," Rolf says. "Creating an environment in which everyone can do well is a key philosophy of OLLI."

Rolf grew up in Delaware and did volunteer work for local organizations during his high school years. He earned an M.A. in economics at UD, served two years in the Army and five years in the Reserves.

Before OLLI, Rolf had a long career in banking, as senior vice president and economist at Delaware Trust and CEO of Beneficial Mortgage Corporation. This was followed by 15 years as executive director of Lutheran Senior Services, Inc. In that role, he became familiar with and interested in services for older adults, which naturally included OLLI. He has served on the boards of several volunteer organizations and is the current chairman of the Delaware Health Facilities Authority.

He and his wife, Sue, have a son and daughter. Outside of OLLI and his other volunteer work, Rolf enjoys golf and DIY home projects.

Continued on page 7

Sherry Rogers

Sherry Rogers shows up in many places at OLLI-W, helping wherever help is needed. She has filled roles in on-going committees, short-term projects, and one-time events, tackling every new challenge with enthusiasm, her calm demeanor and good humor.



After joining OLLI-W in 2018, Sherry "has been volunteering ever since." She's been co-chair of the busy Marketing Committee for the past four years, co-chaired Open House for two years, and was Council secretary for a year before joining Council in 2023. She also chaired the Officer Nominating Committee twice. Last year, Sherry, along with Bob Blazovic and Ruth Mayer, led the huge team that brought back the Used Book Sale for the first time since the pandemic. After enjoying the success and overwhelming response to the event, Sherry readily agreed to be a co-chair again for the next book sale in 2026.

Sherry grew up in Connecticut. She earned an M.S.N. and special certification in trauma nursing and LifeFlight. After working as a nurse for 15 years in Boston, Detroit and Colorado Springs, she took a new and compatible career direction by entering law school. She met her husband, a doctor, in Colorado. They moved to Seattle, where Sherry completed her J.D. and practiced law for many years, as a trial attorney defending doctors and medical personnel in malpractice cases.

After her husband died, Sherry moved to Delaware to be closer to her daughter. The move also made it easier to visit family in Connecticut, including her parents as they grew older. Her father lived to be 100 and her mother, 102.

Sherry is an active animal rights advocate, currently working for Angels Retreat, a dog rescue in West Chester, and she has two rescue dogs of her own. She collaborated with a committee to enact anti-cruelty legislation in Seattle. Other volunteer work includes providing both legal and hands-on support, through the organization STEHM, where women seek shelter from domestic abuse. She serves on its board, and on the

Continued on page 7

Volunteer Spotlight

Susan Flook

Thomas Powderly

Innovative instructor Tom Powderly finds a lot to like about the OLLI community. He became a member eight years ago for the intellectual stimulation and to make new friends, with the goal of becoming an instructor. Tom has taught an extensive variety of courses using all modalities: in-person, online, on-demand, Friday lectures, January Explorations (which he ran in 2024), and community presentations through the OLLI Speakers' Bureau. His main course topics are travel (especially cruise ships and ocean liners), New York City and Broadway theater. Tom loves the continued learning from all the research he does for his classes. He also learns a lot from his following: i.e., members who always take his classes. He is energized by the feedback and reinforcement he gets on the course evaluations. One anonymous class member referred to him as a "national treasure," a fact which he reveals with a modest chuckle.

Tom is a native New Yorker who grew up in Queens but has made Wilmington home for over 30 years. He is a graduate of Niagara University and has a master's degree from The New School for Social Research. Tom also has various professional certifications from The Travel Institute. A long career in the travel industry afforded him the opportunity to circumnavigate the globe, visiting seven continents, 100+ countries, and all 50 states.

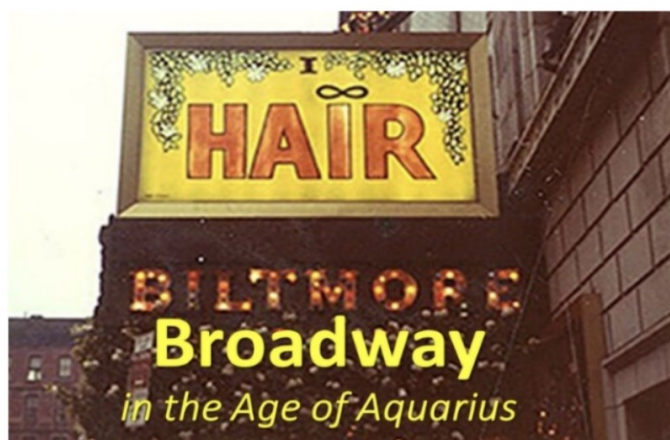


He has spent over 500 nights at sea on over 75 different ocean liners and cruise ships and was named an honorary captain of the QE2. He likes to tell the story of how he became interested in ocean liners. He attended a family member's "bon voyage" party on board the SS America at the age of 9 and has been hooked ever since.

The travel industry became Tom's full-time career both in the corporate world and in higher education. He spent 24 years working for American Express where he held different positions in sales and marketing. Tom was twice winner of the Chairman's Award for Quality, the company's highest honor. After retirement he hosted cruise groups for American Express. For 10 years Tom also served as Director of Brandywine College's Travel and Tourism Management program. Tom's career included leading seminars on land and sea for groups as diverse as USAID, State of Delaware, The American Society of Travel Agents, and the Cruise Line Association.

Tom feels that instructors' efforts are encouraged by the appreciation of their fellow members. He also feels that the courses here have "contemporary value" in a changing world, especially the ones dealing with current trends and events. He is impressed that during Covid the staff and volunteers were so resilient and innovative with the addition of Zoom and now AI courses.

We are grateful to Tom for "docking" at OLLI to teach courses that generate so much enthusiasm. Members benefit greatly from his passion and knowledge about so many areas of interest. Bravo!



Some final thoughts from Tom: His proudest accomplishment at OLLI was the creation of the *New York City: 10 Unique Views* class. Each week OLLI members with a New York connection would highlight personal perspectives of NYC life (see current catalog). Above left, a photo from the *Lincoln Center: NYC's Gift to the World* class session; above right, a photo from the *Broadway in the Age of Aquarius* course.

Continued from page 1

Caitlin's first Fall semester as Program Coordinator will also feature the debut of OLLI Scholars. The OLLI Scholars Program at the University of Delaware provides graduate students and postdocs with a unique opportunity to design and teach a five-week course in their area of interest. "We have three grad students who will teach some courses in the second five-week session of the Fall," Caitlin notes.

Spreading the Word

Caitlin will also work on getting more people interested in OLLI-W.

"Part of that will be exposure of what we have to offer," Caitlin said. "How do we advertise, both in making an ad and getting it out there? And word-of-mouth: How do we make people want to go out and talk about OLLI with their friends?" Caitlin would like to see OLLI-W information included in employers'

retirement packages that highlights the value of lifelong learning, not just educationally, but also socially.

And Caitlin will also continue the work on bringing more statewide unity to the UD OLLI program.

Beyond the borders of Delaware? Caitlin, well aware that UD OLLI is the second largest OLLI program in the U.S., would like it to be a model for OLLIs in other states. "If we can do that, it would not only be better for OLLI in Delaware, but also for OLLI in other states," Caitlin said.

Infectious Enthusiasm

When you meet with Caitlin, you will notice her enthusiasm for joining OLLI-W that will be a key in spreading the word about OLLI.

"I've been fortunate to have had jobs where I've thought 'I get paid to do this?' and this is another one of those jobs," Caitlin said. "I'm

here to make sure this is a good experience for all the members and instructors." Before coming to OLLI-W, Caitlin held positions in education where she worked with a wide range of people, from pre-K children to working professionals. Immediately before coming to OLLI-W, she was Education Coordinator at Chester County History Center in West Chester. Caitlin is also an adjunct professor at University of Maryland, Baltimore County, in American History.

"The biggest thing in my life is to always keep learning," Caitlin said. "If you think you know everything, you're wrong. OLLI-W is something I think I would enjoy when I retire. You have to create the world you want."

So, say hello to Caitlin when you come back to Arsht Hall this fall – whether you find her in the hallways, a classroom or even those times when she is in her office.

Eriksen

Continued from page 5

Rolf coordinates the art exhibits in the Cannon Reading Room. Delightful examples of these displays from OLLI members statewide can be viewed on the website – <http://OLLIUoD.art>.

He also transports students' ceramic projects to Absalom Jones Senior Center two or three times a week to use the kiln for firing. When OLLI-W gets its own kiln, as planned, he will have more time for other projects. Rolf hopes that the art program will expand with even more course offerings.

This versatile volunteer is an active member of the OLLI-W Curriculum Committee and the Fundraising Committee. His contribution of time and talent to OLLI-W is much appreciated, and his enthusiasm is contagious. Rolf says he loves to volunteer, and it shows!

Rogers

Continued from page 5

board of P.E.O., an international organization for women's education.

Sherry sees her OLLI-W classes and volunteer work as opportunities to learn about things she didn't have time for when working. She enjoys making connections with new people who share common interests and experiences.

"We have such a varied group of people at OLLI," Sherry says. "I find myself through other people, and it has opened my eyes to new interests."

Sherry's work at OLLI-W reflects her versatility and a longstanding passion for volunteering. Her contribution is invaluable and greatly appreciated as she puts her time and heart into the program in so many ways.

New OLLI Scholars to Make Debut at Arsht Hall

Rebecca Worley

This fall, we are welcoming two new instructors, and two new courses, to our OLLI community, thanks to the OLLI Scholars program. That program invites graduate students and post-doctoral instructors from all University of Delaware programs to teach for us.

This means that we get to learn about the latest research, and hear the most current information, from any subject area in the UD curriculum. And it's cross-generational; these are young people just starting their professional careers, who will share their enthusiasm and ambition with us. And they will learn from us. OLLI class members are notoriously curious; they ask questions, they share their own experience, and they offer their own unique, experienced perspectives. That's what cross-generational teaching and learning does.

So, both of these new instructors will teach during our second five-week schedule, and they will teach in person, in Arsht Hall. Let me introduce them.

Pamela Ahern, a graduate student in the History Department completing her Ph.D. in European history, will talk to us about the *History of Scotland*, from the Protestant Reformation in the 1560s to the death of Scotland's most beloved author, Walter Scott. And she will include discussion on the role of Mary, Queen of Scots, in this history.



Pamela Ahern

Through primary source readings and discussion, we will learn how Scotland emerged from its reputation as England's backwater neighbor to stand at the forefront of Enlightenment thought.

And she will take us in this exploration through Scotland's unique historical landscape — lochs and glens included — to discover how Scotland's capital became the "Athens of the North."

During the second five-week session, this course will be offered on Mondays, from 12:45 to 2:00.



Mackenzie Ninness

Mackenzie Ninness, completing her Ph.D. in Criminology, is going to take us *Inside U.S. Prisons: Punishment and Corrections*.

This course offers an engaging look at the U.S. criminal legal system with a focus on incarceration and punishment, especially as it impacts women.

Through readings, discussions, and a guest speaker, we'll explore how the system operates and how it affects individuals and communities.

Topics include prison conditions, aging inside, and the challenges of reentry. No background required, just curiosity and a willingness to explore tough but important questions. If you've ever wanted to learn about this system, join the course.

Again, during the second five-week session, this course will be offered Monday mornings from 9:00 to 10:15.

You may have missed these new courses in our print catalog because it had already gone to press by the time these scholars were selected, but they are listed in the digital catalog for Fall 2025. That catalog is available at <https://www.oli.udel.edu/digital-catalog/>

So, if one or both of these courses piques your interest, please sign up. And join our new, intergenerational learning environment and meet these OLLI Scholars.

We at OLLI are just the third program in the U.S. to offer such a program for graduate students and post-doctoral instructors, testimony to our "benchmark" status as one of the nation's most notable OLLIs.

For more information about the OLLI Scholars program, please visit <https://www.udel.edu/academics/colleges/grad/current-students/oli-scholars-program/>

OLLI National Conference 2025

Jean Youkers

The OLLI National Conference 2025 was held April 28-30 in Chantilly, Va., where representatives from OLLIs across the country met to attend presentations and discussions. I was delighted to be able to attend this event with Dr. Karen Asenavage Loptes.

It was fascinating to hear many common themes emerge in conversations with staff and volunteers during breakout sessions, meals and informal networking times. Though the 124 OLLI programs may have different structures and challenges, we all share the same dedication and enthusiasm.

The OLLIs range in size from 500 members to over 1,500. We are among the largest. Every program offers a variety of engaging courses, activities and ideas to make our programs even better. Our OLLI has more course offerings than some, as well as our semester-long courses of 11 and 13 weeks.

Session topics at the conference included fundraising, member retention, working with our affiliated universities, community collaborations, volunteer leader transitions, public relations and marketing communications strategies.

A history of the Bernard Osher Foundation was presented, along with a slide show describing Bernard Osher's journey as businessman, philanthropist, and believer in life-long learning. Mr. Osher, 97 years old, was in attendance and Karen and I were happy to meet him after the presentation.



Jean Youkers, left, and Karen Asenavage Loptes met with Bernard Osher, of the Bernard Osher Foundation, during the OLLI National Conference.

Building back membership after the pandemic was a common theme discussed among attendees, as was promoting the program to younger members. Recruiting more volunteers was another hot topic, with other participants noting that they have more success in recruiting members for short-term projects, rather than for standing committees.

Seeking innovative new activities and courses, including off-site opportunities, was another common trend, and the ideas seemed endless. Successful movie days at local theaters, dinners out, a "Murder at the Museum," musical performances and other programs were described.

I left with my head full of ideas from the presentations and new contacts with whom we can communicate and compare notes in the future. The conference gave an overview of how the entire system works and showcased our universal creativity and dedication. I also left with a heart full of gratitude for the resources and quality we have at OLLI. Our instructors, volunteers, and staff combined are a powerful force. We're on top of every challenge identified by others across the country and prepared to tackle anything as we work together to fulfill our mission. I was proud to say I'm from OLLI Delaware and thankful for the opportunity to do so.

From Admiration of Franklin to a Class on Franklin

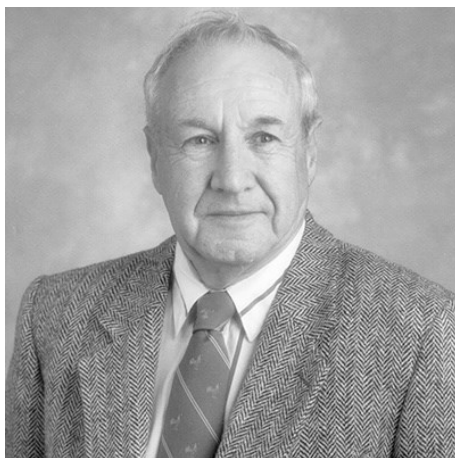
How a Course Began

Robert Ehrlich

I first met Robert Stark, emeritus professor of mathematical sciences and civil and environmental engineering, when he took my class on word processing. His aim was to better participate in the editing of textbooks he was co-authoring.

After retirement he was a founding member and later president of the UD Association of Retired Faculty. He persistently tried to convince his colleagues to join OLLI.

Professor Stark had a wide range of other interests. He was president of the Delaware Academy of Science, and I assisted him in the design of a logo for their merit badge program.



Robert Stark

When he found out that I was curriculum coordinator for history, he beseeched me to find someone to teach a class on Benjamin Franklin. I later learned that his interest in early American history and Franklin had been sparked by a colleague 45

years before. He was a noted collector/researcher of early American silver dollars and secretary of the Bust Dollar Club devoted to the study of these coins.

The effort to establish a Franklin class was not successful. The usual suspects had other interests. I was able to persuade him to give a single lecture on Franklin and early American coinage in the "Historian for a Day" class I was coordinating.

Finally, he gave in and put together a 13-week class on Franklin. It was successful and the class was repeated. My only contribution was to help assemble a PowerPoint on Franklin portraiture.

From a Class on Franklin to Love of a Franklin

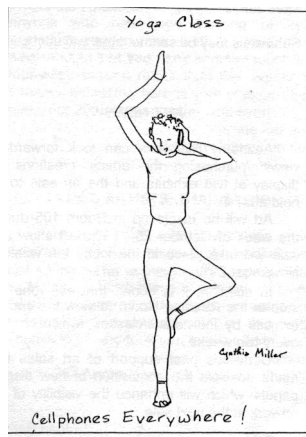
Robert Stark, a widower, took notice of a class member and told her that she looked like Franklin. This was nothing new for Phyllis Franklin Bierstedt, a widow and a direct descendant of Benjamin's brother. The relationship of Bob and Phyllis did not end there, and their obituaries recognize each other as "a loving partner."



Phyllis Franklin Bierstedt

Our Constant Companions

Here are a couple of cartoons by OLLI members that take a light-hearted view of cellphones — those "can't live with 'em, can't live without 'em" devices that define life in the 21st century.



ALL in Fun

by Bolt

NOTE TO ALL INSTRUCTORS:-

If 75% of your class falls asleep, lower your voice so the rest of the class can join them - then tiptoe quietly out of the classroom.

P.S. Ignore this!
The ringing of cell phones will keep most of your class awake.



How Some More Courses Began

Yoga

From an interview conducted by Pat Pheris on Oct. 27, 2009.

Martha Newlon started teaching at the Academy of Lifelong Learning due to the pressure of a good friend, Nancy Aldrich, the first administrator of the Academy. Martha says, "I had told her this can't work, for what teacher would be foolish enough to pay to teach when they had been earning an income from teaching before? So, Nancy invited me down to the University for lunch and brought in the heavyweight, Associate Provost Rich Fischer. I was persuaded to teach one term as an experiment. I found that my Academy yoga students were intensely interested and game to try something new with no self-consciousness or embarrassment when things didn't go right with a posture. Their enthusiasm and conviction that yoga was making a big difference in improving their health made teaching a joy and satisfying. It was worth the tuition cost. So, I was hooked and eventually left my private classes for which I was paid, as Academy classes grew in size and numbers of classes. Happily, several of my wonderful private stu-



Martha Newlon

dents took teacher training and recruited some other outstanding teachers." Martha added, "Interestingly, the early classes attracted 10 percent or more of the total enrollment of the Academy enrollment."

Martha brought in her husband to join in teaching yoga. Later, she switched to music, (her first vocation was music education) and was instrumental in establishing what became to Concert Band. As with yoga, she touted the role of music in maintaining health and kept at it to age 95.

Current Events



Sig Ettinger

Sig Ettinger's wife, Betty, joined the Academy in 1981. When Sig saw the catalog and selection of offerings, he was jealous and two years later, he joined even though he continued working at his business, Bag and Baggage, until 1987. Sig was a news "junkie" since he was five. He read several newspapers daily and taped news programs. While in line

to register he noted to Flo Garrett, then University Coordinator, that there was no Current Events class. Flo suggested that Sig offer one. He did and continued for 40+ semesters.

OLLI Monthly News in Wilmington

<http://www.oli.udel.edu/wilmington/newsletter/>

**Osher Lifelong Learning Institute
at the University of Delaware in Wilmington
2700 Pennsylvania Avenue, Wilmington, DE 19806
(302) 573-4417**

Editor Robert Ehrlich, Mary Pat Elmlinger

Associate Editor Rebecca Worley

Associates Fred Hosier, Cree Hovsepian,
Margaret Wang, Jean Youkers

Next Submittal deadline: Oct. 15, 2025

Issue date: November 2025

Submit articles to rehlich@udel.edu.

OLLI 2025 FALL SCHEDULE

Fall semester starts on Tuesday, Sept. 2

13 week classes — Sept. 2-Dec. 5 (Wilmington in-person)

11-week classes — Sept. 2-Nov. 17 (Kent/Sussex in-person and OLLI Online)

1st 5-week classes — Sept. 2-Oct. 6 (Wilmington in-person, Kent/Sussex in-person and OLLI Online)

2nd 5-week classes — Oct. 14-Nov. 17 (Wilmington in-person, Kent/Sussex in-person and OLLI Online)

No classes held during the Thanksgiving break (Nov. 25-28)