



SEPTEMBER 2023

Introducing OLLI’s New Statewide Director Karen Asenavage Loptes

Jean Youkers

When Karen walked in the door of OLLI, she knew it was the place she was meant to be. Joining OLLI as Director pulled together her varied interests and work experiences— in art, science, music, travel, international affairs, education, teaching, and volunteerism. Her first week in her new role was spent visiting each of the OLLI Open Houses in Dover, Lewes, Ocean View, and Wilmington.



Meeting staff and volunteers, Karen took note of details, with obvious enthusiasm and eagerness to get started.

“I have a lot to learn and will look for input from staff, Council, and members and look ahead to what we can do together,” Karen said.

Karen grew up in Delaware County, PA, and moved to Delaware with her family in high school. She and her sisters attended St. Marks High School and her mother founded a Montessori school. She’s covered a lot of territory both geographically and academically, earning her B.A. in Biology (Messiah College), M.A. in Teaching English as a Second Language (Ball State University), and her Ph.D. in

Organizational Leadership in Higher Education at Eastern University.

With some other stops along the way, Karen spent more than a decade at the United Arab Emirates University and the Higher Colleges of Technology in the United Arab Emirates (UAE), where she taught English as a Second Language (ESL) and directed a program for teaching ESL to specific academic areas, such as science and math. Karen returned to the United States to hold leadership and teaching roles

at the University of Pennsylvania and Yale University. She returned to Delaware and extended her career at the University of Delaware as Associate Director of the English Language Institute (ELI) and its Academic Director.

Karen’s ideas are already spinning, ranging from combining language and geography classes with travel opportunities to taking some classes herself. Besides taking on a busy role as Director, she will be joining Susan Salkin (Dover), this fall, in her course,

(Continued on page 2)

Inside

Bebe Coke Honored	p. 2
Curriculum Committee...	p. 3
Finance Committee	p. 4
Earth Day	p. 5
OLLI Legacy Society	p. 6

“Making Music”	p. 7
Spotlight on Volunteers:	p. 8
UD by the Sea.....	p.9
“Interlude at Rehoboth” .	p.9
Schedule/Events	p.9

(Continued from page 1)

Armchair Adventures/Travel with Friends, to share her travels in the UAE, Saudi Arabia, and Oman.

Karen met her husband, Arun Loptes, a native of India, while working in the town of Al Ain in the UAE. She describes him as amazing, an excellent chef, and among other things, he speaks seven languages. The two enjoy cooking together and traveling.

Karen’s passion for travel began with her fifth-grade geography teacher. Studying countries around the world, Karen kept notes and amassed a long list of places she wanted to visit.

Somehow, she manages to find the time to work out several days a week! Karen also likes to read, especially mysteries.

“I’m incredibly honored to work with everyone at OLLI. I’ve always valued the wisdom of people who have gone before me,” Karen said.

We welcome Karen as she begins working with all of us as we build back membership from the pandemic and maintain the high quality that makes OLLI Delaware a bellwether program among OLLIs nationally. Another important thing to know about Karen: “I’ve always done what I say I’m going to do.”

If you haven’t met Karen yet, stop in the office to say hello. She’s friendly and would love to meet you.

Bebe Coker to Receive ACLU-DE Kandler Award

On October 18, the ACLU of Delaware will honor Beatrice “Bebe” Coker, with their 2023 Kandler award. Bebe has been a community activist in Delaware for more than 50 years. She has worked in social services, public and community relations and diversity training. She has been committed to improving Delaware’s education system. She chaired the State Civil Rights Commission and has aided numerous organizations focused on literacy. She is cited as embodying a passion and motivation for justice just like past ACLU-DE



President Gerald "Gerry" E. Kandler’s unwavering commitment to the values of the ACLU. She has been recognized with prestigious honors including the UD Medal of Distinction and induction into the Delaware Women’s Hall of Fame. Bebe is a member and instructor at OLLI-W and is currently teaching “Legalized Racism.” Other OLLI members who have received the Kandler award are Roxana Arsht, Joseph Rosenthal, Liane Sorenson, Susan Del Pesco and Carl Schnee.

I Heart UD Day



Greeting members at I Heart Day rally in Arsht Hall

280 OLLI-W members donated over \$50,000 placing us third on the UD Leader board, just behind OLLI-K/S. This exceeded the goal of \$40,000 to refurbish our lobby including brand new window shades and two wall-mounted LCD TV screens, We also will use the funds to continue the growth of OLLI Wilmington!



Musical entertainment



Moo-Mobile

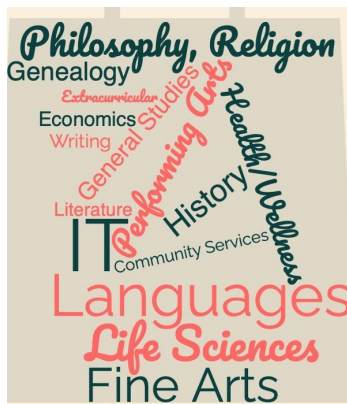
The Curriculum Committee at OLLI Wilmington

Rose Greer

In my experience as a former classroom teacher, the term “curriculum” generally referred to the prescribed knowledge and skills that students were expected to learn as their education progressed. Here at OLLI, that definition still holds somewhat true, while becoming less specific and more expansive.

Curriculum includes any facet of learning that improves knowledge, skills, appreciation, and enjoyment in a personalized and social setting. OLLI’s curriculum is self-generated and dynamic, with a wealth of options from which to choose. All these offerings, created and taught voluntarily by our own membership, make up OLLI’s curriculum. We strive for excellence in the personal standards to which we hold ourselves. This is where our Curriculum Committee comes into play, balancing individual interests with professionalism and high quality.

The OLLI Wilmington Curriculum Committee serves as a standing committee of the OLLI Council, with the purpose of ensuring that our curriculum addresses the needs and desires of our population. In addition to certain ex-officio members, the Curriculum Committee is made up of Area Coordinators, who each oversee a certain discipline or area of purview. Prospective Area Coordinators should have experience teaching at OLLI, have knowledge of the content area they oversee, and should demonstrate good listening, communication, and problem-solving skills. They are recommended from the field of OLLI instructors and are vetted by the Program Coordinator and the existing team of Area Coordinators.



The Curriculum Committee strives to provide a forum for innovation, creativity, and curiosity in both teaching and learning within a friendly, warm, and welcoming environment. We encourage flexibility in the development of new offerings that are not only well-sequenced and appropriate, but engaging, intellectually stimulating, and even fun. At the same time, and above all, we require respect for diverse peoples, ideas, voices, and perspectives so that all members feel welcome and valued.

Curriculum Committee members assist in recruiting or interviewing prospective instructors, or assist volunteers as needed. New instructors are always welcome. As individuals offer to teach their courses, the Committee member responsible for that area of study is available to help in the development of the course if needed or desired. Before each semester, as instructors submit their course proposals, the appropriate Curriculum Committee member reviews them. If approved, a new course can be included in the offerings for the upcoming semester.

The Curriculum Committee representatives may organize and lead departmental orientation meetings at the beginning of the semester and are encouraged to maintain regular contact with the instructors throughout, conveying questions and concerns as needed. In summary, the Curriculum Committee strives to promote excellence in all aspects of course offerings by means of collaboration among members and the community to support the vision and mission of OLLI.

Curriculum Committee

Rose Greer and Judy Diner, Co-chairs

A list of members of the curriculum committee and the areas that they coordinate are found on page 7 of the Fall 2023 catalog.

Finance Committee Budget Development

Phil Weinberg, Chair and Helen McMahon, Co-chair

This article is in response to questions by OLLI members who have asked how the OLLI-W budget is prepared. The Finance Committee is made up of a Chair and co-Chair, plus former finance chairs. Its purpose is to review the OLLI-W finances on an ongoing process, to develop an annual budget, and to consider any new major expenses or revenue plans.

The budgeting process begins in late summer for the fiscal year (FY) beginning the following July 1. For example, the FY2025 begins July 1, 2024 and ends June 30, 2025. The FY2025 budget process starts with the actual FY2023 revenue and expenses data and the FY2024 budget. We do this for comparison purposes while creating the new budget.

Expenses – We obtain the best estimate of our personnel expenses from the OLLI director. This covers all our office personnel, both on- and off-site, as well as the audio/visual assistants (some of our personnel are part-time). The estimate consideration expected salary/wage increases, benefits, and promotions, if any. In FY2024 it was forecast at 56% of the total.

The next major expense is the facilities and maintenance cost for the Wilmington campus obtained from the UD business office. This expense represents a major proportion of our total annual expense (for FY2024 it was budgeted at 30% of the total).

Other costs, (14% of total costs in FY2024) include expenses for small equipment purchases, office equipment maintenance contracts, office and classroom supplies, travel, food, software fees, credit card fees, printing, advertising, postage, and other misc. expenses. These are estimated based upon previous years' expenses, expected inflation, and estimates from our committees on what is expected in the future. Once the budget is approved, unexpected expenses that were not budgeted need to be reviewed by the Finance and Executive committees before being brought to Council for approval.

Total budgeted expenses for FY2024 were estimated to be \$1,383,000.

Revenue is made up mostly of fees, most of which come from the fall and spring semesters plus a small amount from the summer classes. The primary factor determining revenue is the number of students who enroll. So, it is very important that our enrollment continues to increase. This semester, as an incentive, we are offering a \$15 award for any current member referring a new member.

A major consideration is the enrollment fee. We know that if our enrollment numbers don't increase sufficiently, we need to gradually increase our fee to make up for any increase in expenses. If an increase is warranted, we try to minimize it. This year it was increased by 4% (\$10 per semester), but we are also offering an annual discount if anyone pays for the entire year vs. paying each semester. Revenue from fees is estimated to be 66% of total revenue.

To make up for the difference between enrollment revenue and expected expenses, we are fortunate to have past and present members who have provided substantial endowments. The endowments are managed by UD. In late summer or early fall, UD provides OLLI with an estimate of the endowment income we can expect. Guidelines allow OLLI to use up to 85% of the annual income. The remaining unused income is set aside and we can use up to 10% of the total accumulated unused income. FY2024 usable endowment income amounted to 21% of total.

The remaining revenue comes from various funds, including the Gift Fund, which have been generously donated by our members, past and present. This amounts in FY2024 to 13% of total revenue.. OLLI-W is fortunate to have a wonderful Fundraising Committee which works with UD Development and provides expertise in this area.

The proposed FY 2025 budget is submitted to the Finance Committee for review and approval in November. It is then presented to Council for final adjustments and approval. A summary of the budget with an explanation is published in the OLLI Newsletter in the spring.

OLLI ECO TEAM and Earth Day 2023

Mike Rominger

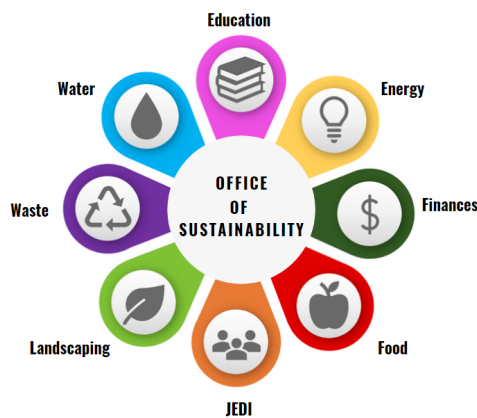
THE OLLI ECO TEAM of Wilmington held a very successful Earth Day event at our campus in April 2023. This continued our tradition of doing something special during that week.

Our activities matched up well with the UD's Sustainability Council' guidelines as we strive to help our members be as green as possible. We did, however, add our own touches like a bird walk and popcorn. Popcorn is not on the wheel, but here are some of our activities (with a note to indicate how they align with the UD E.C.O. Wheel).

We asked our members to bring in plastic that day that could be 100% recycled (WASTE – Recycling).

We educated hundreds of our members by informing them that mowing less and planting more native pollinators is not just nice - it's vital. (LANDSCAPING – Native Plants).

Our \$50 gift certificate to Harvest Grill and our plant giveaway (LANDSCAPING – Native Plants) drew 132 entries! The requirement was to bring in plastic for Eco Plastics (WASTE – Recycling) and/or commit to joining Doug Tallamy's Home Grown National Park initiative and "get on the map." The 2nd annual Shirley Lerner 200+ native plant give-away was available to folks who likewise pledged to "Get on the Map" on Doug Tallamy's site.

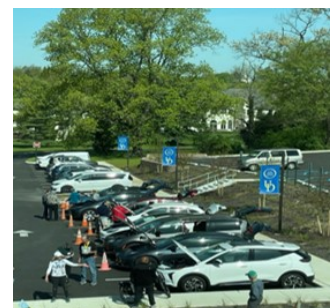


The Energize Delaware representatives reported that 14 persons signed up for home energy assessments (ENERGY – Buildings). The 20 folks who submitted completed crossword puzzles would receive dimmable light bulbs, a power strip, caulk strips, and night lights. Energize

Delaware also gave away 60 pens and 432 LED lightbulbs!



Our "Amazing" Charlie Carter organized a very popular EV car show (ENERGY - Electric Vehicles) that featured EVs across the price spectrum. Something for every budget! Nothing beats talking to enthusiastic owners and seeing the goods!



"Special Thanks" to Pam Vari and her fellow staff members who ensured that our many events were well coordinated!



Celebrating the Osher Lifelong Learning Legacy Society

Submitted by Megan Cantalupo, UD Development and Alumni Relations

Members of the Osher Lifelong Learning Legacy Society – generous donors who include a gift to OLLI as part of their estate plan – reunited for an evening of fellowship and botanical education on May 9, 2023.

Associate Provost of the University of Delaware, Dr. George Irvine, thanked the group for their generosity and gifts of time, talent and treasure to OLLI and congratulated them on the success of the recent I Heart UD Day, which raised more than \$50,000 for OLLI-Wilmington.



During the program, Steven Dombchik (pictured above) reflected on his longtime leadership at OLLI, and how much OLLI meant to him and his late wife, Rhoda, who passed away last October. The engagement and fulfillment from their OLLI experience led the couple to become two of OLLI's strongest philanthropic supporters who decided to extend their generosity through their estate.

Beth Stark, manager of the historic Goodstay Gardens, attended the event as a special guest. The

beautiful gardens, managed by the Friends of Goodstay Gardens and open to the public, border the Arsht Hall property. After a brief presentation on the history of Goodstay, Beth led the legacy society members outside for a private tour of the flowering landscape.

The Osher Lifelong Learning Legacy Society celebrates those who, through their estate plans, will



provide support for future OLLI programming and scholarships for new members. There are many options for including OLLI in your estate including bequests, retirement plan beneficiary designations, charitable gift annuities, gifts of real estate and more.

If you are interested in learning more about the many ways an estate gift can support OLLI, contact Nathana Jackson, senior director of gift planning at the University of Delaware, at ndlane@udel.edu or 302-831-6093.

**Osher Lifelong
Learning Legacy Society**

Creating a Legacy at OLLI



Making Music

Ellen Strober

My father was a musician. He had a day job, but worked weekends playing piano in a band at weddings and bar mitzvahs. My daughters are both musically talented. So, even though I sing in the key of M (for monotone), I thought I was a carrier of the musicality gene: from him, through me, to them.

I decided to learn to play an instrument, starting with beginning flute class at OLLI.. My classmates had been music MAJORS. I had to learn how to READ music. By the time I figure out what note I am looking at, where to place my fingers to create that note and how to produce sound from my instrument, everybody else is quite a few measures down the road.

I'll never catch up.

Homework is to practice lessons one through thirteen? Not gonna happen! Next I try recorder. Fewer holes, simpler music. It's hard to get used to being the worst, but here I am again, representing the low end of the bell curve, trying desperately for "row, row, row your boat."

Last resort is drum ensemble. Yes, I can clap, slap, or thump in time with the music. Bully for me! This is NOT what I had in mind.

I joke to my friend, Jack, that I might have to lower my sights, and settle for playing the triangle.

Jack gives me a birthday present. It is a poster of my face, announcing a concert featuring me on the Baroque Triangle, playing Handel and Bach selections on February 29, and 30th. Now, THAT'S more like it!


I find a spot to display the poster, and retire my musical career.

The Philadelphia Orchestra
Wolfgang Sawallisch, Music Director

Presents
A Program of Baroque

Music by:

- Handel
- Vivaldi
- Bach
- Telemann
- Pachelbel



Featuring:
Ellen Strober,
 Baroque Triangle Soloist

"A dazzling performance!"
-New York Times

"Brilliant!"
-Village Voice

Saturday, February 29, 2003 at 2:30pm
Sunday, February 30, 2003 at 7:30pm

Kimmel Center for the Performing Arts
 Broad & Spruce Streets
 Philadelphia, PA 19153
 Tickets \$28-\$65, Student rush \$10



"Making Music" was copied from the OLLI Writers site with permission of the author. Works of creative non-fiction by OLLI members can be found at: <https://sites.google.com/view/osherwrites/osher-writers?authuser=0>

Volunteer Spotlight

Jean Youkers

Judy Filipkowski

A love of architecture, history, and teaching are magically combined when Judy Filipkowski prepares her intriguing course offerings at OLLI-W. She's been a volunteer instructor for the past twenty years.



Judy Filipkowski

Judy's classes evolve and expand as she continually researches architecture, Philadelphia history, plant-based diets, and other topics, such as New York skyscrapers. She teaches spring and fall semesters, plus summer school.

Judy earned an MA in History and MS in Educational Media at Temple University. This fourth-grade teacher, who taught for 30 years, had delved into history research for a school project. That interest led to her becoming an architectural tour guide in Philadelphia. A lifelong Philadelphian, Judy had to "cross the state line" in 1989 when she married her husband, Frank, a Delawarean. She soon embraced Delaware, joining OLLI-W and becoming a docent at the Delaware Art Museum and Rockwood Museum. She has continued in these volunteer roles for decades.

Judy has two daughters, one son, three granddaughters, a great granddaughter, and another great granddaughter expected soon.

Judy became an OLLI-W instructor because she missed teaching. She loves "sharing her knowledge" and says the OLLI-W students are great. "They listen and pay attention," and later mention things they see in Philadelphia that they recall from class discussions.

One OLLI-W member described Judy's classes as "excellent, invigorating, and very organized—with great visuals to go with the lectures."

"OLLI is a gem," Judy says. "It's such an important part of what I do and what I love about Delaware." Judy's dedication and creativity are certainly appreciated. She is a gem, too.



Paul and Joyce Hess

Paul and Joyce Hess

When OLLI-W members hear lovely music streaming from Room 105 on Friday mornings, it's the Concert Band, conducted by Joyce and Paul Hess.

Both have taught and participated in OLLI-W music programs for many years, also conducting and performing in the Clarinet Ensemble.

Joyce and Paul grew up in Delaware and majored in instrumental music at the University of Delaware. After completing her B.A., Joyce taught in Middletown and Ursuline Academy. She began playing bassoon upon joining OLLI-W and soon embarked on volunteer roles of teaching and conducting. Besides music, Joyce loves games and animals.

Paul earned a B.A. and M.M. at UD and taught in Middletown and Christina School Districts, Lincoln University, and UD. He's performed in a variety of venues on string bass, electric bass, and tuba. Other interests include cycling and reading.

Joyce and Paul began their careers at Middletown and ended up at Ursuline, teaching together again—even in the same classroom, just as they do now at OLLI-W.

Paul was recruited to teach at OLLI-W by an enthusiastic instructor in 2009. "You learn as you teach," he says. OLLI-W students are "amazing people who bring much thought to the program. It's very exciting." Paul's advice to those considering teaching: "Do it!"

Both enjoy seeing members who haven't played for decades pick up their instruments again. "The band is a family," Joyce says. "Everybody at OLLI-W cares about everybody else, and that includes the staff."

The many talents and obvious love of teaching make this musical couple a wonderful part of everyone's OLLI-W experience.

UD by the Sea 2023 held May 24-25 at the Atlantic Sands Hotel and Conference Center in Rehoboth Beach offered five tracks.



Track 1 — Delaware’s Culinary Arts — Four local chefs participated including James Beard nominee Hari Cameron. Samples and a wine tasting were a draw. The sold-out track was featured in the *Cape Gazette* on June 1.

Track 2 — Arts in Delaware — This track featured a tour of the Rehoboth Art League and Clear Space Theatre Company.

Track 3 — U.S. Foreign Affairs — Experts with extensive and insightful experience with foreign policy issues included Ralph Begleiter, former CNN world affairs correspondent and founder, UD Center for Political Communication.

Track 4 — History: Two Cities and the Sea — This track included field trips to local historical sites.

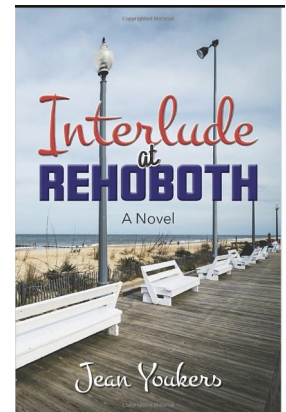
Track 5 — Dela-Where? — A highlight was Dan Strumpf, public defender for Sussex County, presenting, “Delaware Office of Defense Services: A Day in the Life of a Public Defender.”

OLLI Author — Jean Youkers

Interlude at Rehoboth, the sequel to *Lunch Bucket Lists*, continues the adventures of four mature *and* creative women who live in Rehoboth Beach . In facing a series of surprises they remain engrossed in life in their beloved beach town. As in real life, serious and humorous situations are often intertwined, to be enjoyed or endured with good friends. The book is available from Amazon.

Jean loves to walk around Rehoboth, look at the ocean, watch the sunrise, and scope out scenes which form the background for her stories. She attended UD by the Sea and allowed extra time to walk around. She notes: “Readers always enjoy reading about familiar places.”

Her enduring connection with Rehoboth began when she entered the Rehoboth Beach Reads short story contests and had six of her stories included in contest anthologies.



OLLI Monthly News in Wilmington
<http://www.oli.udel.edu/wilmington/newsletter/>

Osher Lifelong Learning Institute
at the University of Delaware in Wilmington
2700 Pennsylvania Avenue, Wilmington, DE 19806
(302) 573-4417

Editor Robert Ehrlich,
Associate Editors Mary Pat Elmlinger, Rebecca Worley
Associates Fred Hosier, Cree Hovsepian, Joel Roisman,
 Margaret Wang, Jean Youkers

Next submittal deadline: Friday, October 27

Issue date: November 13

Submit articles to rehlich@udel.edu.

2023 Schedule

October 9..... 1st 5 week session ends
October 17 2nd 5-week session begins
November 202nd 5-week &
 11-week sessions end
November 22-24 Thanksgiving Break
December 8 13-week session ends
 (OLLI Wilmington – in person at Arsht Hall)