



NOVEMBER 2022

Campus Improvements

Jennifer Merrill, Director, OLLI-W, OLLI Online

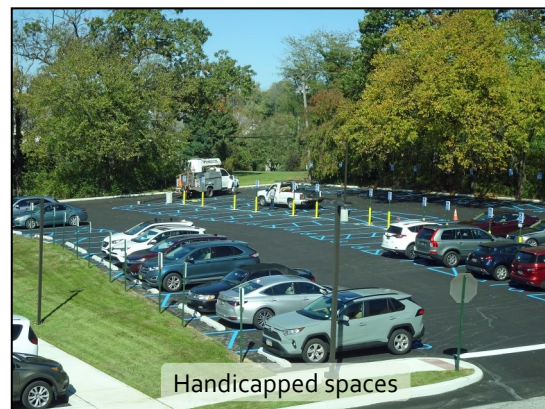
It's with gratitude and a grin that I'm happy to share the news that the new parking lots on the Wilmington Campus are complete. These new lots are the capstone on a number of capital investments in safety, funded first and foremost by donations to the OLLI program and with important contributions from the University of Delaware.



handicapped spaces. New efficient lighting, three emergency phones and two video cameras enhance safety. Finishing touches include plantings of shrubs and trees this fall with some trees installed next spring. Safety in the lots, for pedestrians and drivers, is vastly improved since 2018. As the primary users of this UD campus in Wilmington, OLLI provides important

The most recent capital campaign conducted at OLLI Wilmington was our "Renewing the Dream" effort in 2014-2018. Volunteers and the UD Development and Alumni Relations office worked together, and raised \$1,793,000 with aided \$1,793,000 with a record number of members contributing. . It was a truly remarkable campaign, particularly given that the goal was set at \$1,500,000! Funds were used to replace the HVAC in Arsht Hall. Bathrooms were upgraded. When the interior projects were completed remaining funds combined with funds contributed by the University were used to tackle safety improvements outside. In 2018, sidewalks were installed to allow safe passage down the hill from the upper lots and immediately in front of Arsht Hall. Lighting in front of Arsht Hall was replaced. And now we have completed two new parking lots with a significant expansion that added 156 new parking spaces, including 58

financial contributions to the capital projects. University staff in real estate, facilities, project planning, procurement and other offices provide the personnel to deliver the projects, and that is to the benefit of OLLI and its members. When you see someone from a UD department here in Arsht Hall, or on site, take a second to thank them. We could not have our OLLI program without their help!



Inside

Campus Retention Ponds.....	p. 2	Spotlight on Volunteers.....	p. 5
January Explorations.....	p. 3	Year-end Giving to OLLI	p. 6
OLLI Gift Certificates	p. 3	Special Events Fridays	p. 7
Meet New OLLI-W staff	p. 4		

Campus Retention Ponds

Jim Hainer

Inspired by presentations about the Delaware wetlands made at OLLI, I have been keeping an eye on what I thought was a marsh/wetland near the front of Arsht Hall. Redwing blackbirds flutter through the reeds and our birdhouses there are popular for nesting bluebirds.

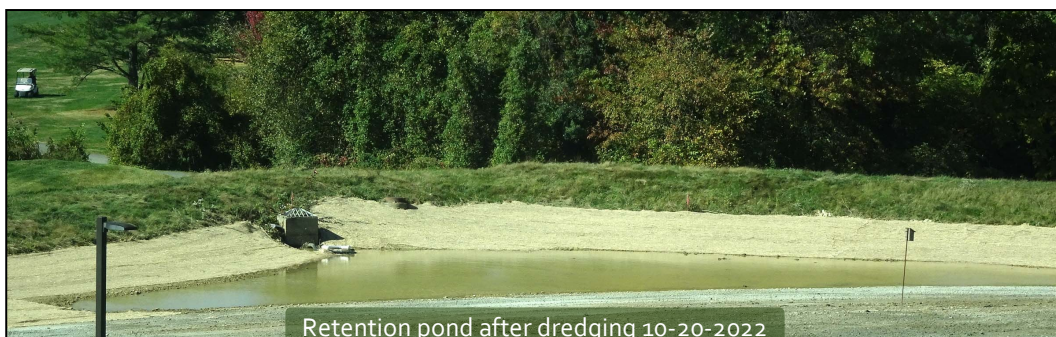
In mid-October I stood aghast at the sight of a behemoth yellow power shovel and bulldozer tearing away the “marsh.” Subsequently I was informed it was a retention pond.

Retention ponds, as I am learning, are environmental friends. Not only do they hold surface water runoff to prevent flooding and erosion, but clear silt and pollutants (heavy metals, bacterial sediments), thereby discharging healthier water.

Retention ponds require periodic maintenance (about every 10 years) to remove accumulated silt, pollutants, and invasive plants, such as cattails and phragmites. A healthy pond will have a pool of water surrounded by non-invasive vegetation.

Perhaps this experience will inspire OLLI members to explore opportunities for wetlands on campus as well as to participate in mitigation activities regarding surface water run-off.

Learn more about the UD’s watershed action team at <http://www1.udel.edu/water/mission.html> and DNREC Sediment and Stormwater Management Program <https://dnrec.alpha.delaware.gov/watershed-stewardship/sediment-stormwater/>





FREE ZOOM CLASSES TO WARM UP THOSE COLD JANUARY DAYS

Details coming December 2022.



Help Wanted

OLLI Council is looking for a volunteer to be Co-Chair of the Finance Committee to assist Chair-Person Phil Weinberg. The volunteer must have some financial or business background and be familiar with Microsoft Excel. It is the responsibility of the Chair to present the Quarterly Finance Report to Council and to prepare the OLLI annual budget each year. The co-chair will assist. We will work with Luci Angeline, the Finance Coordinator associated with the OLLI Office staff. Anyone interested, please contact Phil Weinberg. Email: pbweinde@comcast.net.

Holiday Gift Certificates

Jennifer Merrill



With the holiday season approaching, chances are you're in line to receive gift cards for shops, restaurants, or online merchants.

Or perhaps you're looking for the perfect gift card for a friend.

But 42% of Baby Boomers still have one or more unused gift cards from last year, according to a recent article in *USA Today*.

One reason may be that some gift-givers simply don't know which gift cards are most likely to be put to good use.

If family members or friends typically give gift cards for holidays or birthdays, you can guide them toward a practical gift you're certain to enjoy by suggesting an OLLI gift certificate.

And if you're looking for a gift for a friend or neighbor, a gift certificate would be a perfect way to introduce them to OLLI and the learning, socialization, and fun that members enjoy.

Certificates are available in denominations of \$25, \$50, \$100 and \$250, and may be requested via email at lll-wilm@udel.edu or by calling Luci Angeline at 302-573-4415.

An OLLI gift certificate definitely will be put to good use. It's a gift that will enable any recipient to stay intellectually engaged, socially vibrant, and physically active.

Meet New OLLI-W Staff Member Carl Snider

Profile and Picture by Jean Youkers

Carl Snider joined the OLLI-W staff this summer to assist with the audio visual and room set-up needs of the classes scheduled in Arsht Hall. He's here from 1 to 5 pm, Monday through Friday.

Carl was born in Missouri and moved to the Flint, Michigan, area at age five. He remained there until he relocated to Delaware in December 2021.

He describes himself as a jack of all trades, whose experience included 30 years as owner/operator of an industrial laundry business, which transitioned into a screen printing and embroidery business. Carl earned an electronics technician certificate, a federal radio technician license and took computer courses at the University of Michigan. At age 72, he earned his B.S. in networking in communications at DeVry University. He feels he's using these talents at OLLI-W and is happy to learn more.



The move to Delaware enabled Carl to easily visit his daughters, one in Kennett Square and the other in New York City. He has five grandchildren. Besides being with family, Carl has embraced his new location by exploring museums and other attractions, through the Brandywine Passport Program. So far, his favorites are Longwood Gardens and Winterthur. He also

attends concerts and dining events through Meet Ups.

Carl enjoys working at OLLI-W. "It's a great concept with many programs of interest to me. I like the people and talking to them," Carl says. "The members are my age!"

His diverse background of accomplishments and interest in the program make Carl a welcome addition to the OLLI-W staff.

OLLI in Newark

Plans are underway to have a limited number of OLLI classes on the Newark Campus. Among these classes is the Exploring UD class that has not been held since the pandemic. Classes will be at the building housing Professional and Continuing Studies, 501 S. College Avenue.

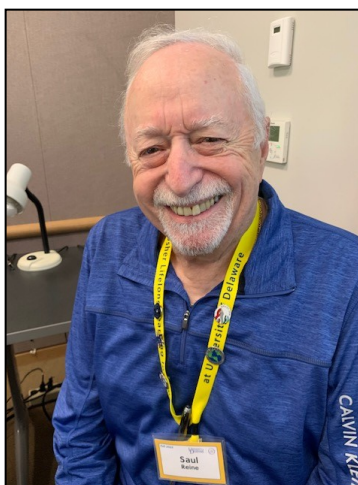


501 S. College Avenue, from Google Maps

Volunteer Spotlight

Jean Youkers, New Member Relations & Volunteer Engagement

Saul Reine



“When I retired from teaching, I learned that you never retire from teaching if it’s your passion,” says Saul Reine, instructor of various OLLI-W courses since 2003. He currently teaches Windows Management and a course on physicist Richard Feynman, as well as the PC Users Group. He is also co-chairman of the OLLI-W Curriculum Committee and the Computer Coordination Committee.

A native of New York, Saul earned his B.S. and M.S. equivalent in microbiology at Long Island University. He first taught biology, then became assistant principal and science director in schools in New York, Brooklyn, and Long Island. His stint at OLLI-W is his longest time spent in any one school. Saul’s experience in all settings adds up to an impressive 60 years as an educator!

Saul’s other interests include tinkering with cars and houses, digital photography, and roaming Civil War battlefields. He describes himself as a self-taught “computer nerd.”

Saul and his wife Blanche, a longstanding OLLI-W member who also Zooms with OLLI programs in other states, moved to Delaware to be closer to their two daughters and four grandchildren. Upon arriving here, Saul heard about OLLI-W (then the Academy of Lifelong Learning) from his realtor, Libby Zurkow.

“This place is wonderful,” Saul says. “We all want to be here.” OLLI-W has enabled him to teach, take classes, meet new friends, and play with computers. Through participation in the Curriculum Committee, he’s seen the goal of upgrading the level of instruction come to fruition over the years. Saul’s contribution has certainly played a part in this achievement. His knowledge and enthusiasm are appreciated.

Options for Year-End Giving to Osher Lifelong Learning Institute – Wilmington (OLLI-W)

As we approach the end of the calendar year, we encourage you to consider what charitable giving options are best for your personal financial situation. For members over the age of 70 ½ who must take a required minimum distribution (RMD), you have the opportunity to donate pre-tax income to OLLI, thereby reducing your 2022 taxable income. To transfer appreciated stock or make a gift from your IRA to benefit OLLI-W, please consult your financial advisor and call the University of Delaware Development Office at 1-866-535-4504.

To make a gift or pledge payment to OLLI-W, you can:

- Give online at www.udel.edu/olliw
- Send a check to 83 E. Main Street, 3rd Floor, Newark, DE 19716
- Or call 302-831-2104 / 1-866-535-4504

Checks and envelopes must be postmarked no later than December 31, 2022, to process in calendar year 2022.

If you have any questions, please call 1-866-535-4504 or contact annualgiving@udel.edu.

Make a Difference for OLLI this GivingTuesday



Each year on the Tuesday after Thanksgiving, donors from around the world come together to make a difference on GivingTuesday. Be sure to put OLLI at the top of your list of organizations and causes to support! This year, OLLI is actively participating in GivingTuesday with more than 50 featured fundraising projects at the University of Delaware.

[Make your gift online now through November 29](#) and join in making a difference for OLLI by ensuring a bright future for the program.

Special Events Fridays via Zoom Ben Raphael and Larry Peterson

Please check the weekly updates for more details and Zoom links. **November 4 “Civil Discourse at the Biden School”** Timothy Schaffer, Stavros Niarchos Foundation (SNF) Chair of Civil Discourse in the Joseph R. Biden, Jr. School at UD.

November 11 Yemina Israel/Reeds Refuge Music (see article below)

November 18 “Is There Life After the Midterms? The path Forward for Biden, Democrats and the GOP.” Jill Lawrence, Columnist, *USA Today*

Feel free to invite your friends and family.

Presentations begin promptly at 12:30 p.m. and end at 1:45 p.m.

Community Engagement: A Very Special, Special Events Friday on November 11

Jennifer Merrill

This summer I had the pleasure of working with Reeds Refuge, a local organization dedicated to inspiring and educating Wilmington students through the arts. In 2021 UD’s Community Engagement Initiative was awarded a generous grant from the Jessie Ball DuPont Fund. The award was used to fund twenty smaller awards of \$5,000 each to a local community organization partnering with a UD faculty or staff member. Partnerships were required to benefit residents of Wilmington, specifically. I couldn’t miss the opportunity to secure funds for an inspirational team I had met in my prior role at UD.



Before moving over to OLLI, I worked to extend Delaware Sea Grant’s work and investments north. As I learned more about Wilmington in that role, I was introduced to Reeds Refuge. The passion and dedication of founders, Fred and Cora Reed, was contagious.

The grant funded video equipment and a professional sound engineer to help cover the cost of creating a video. “Dream,” a song about inspiration is what children need to rise above their current situations. Please join us for SEF on November 11 to see the music video the students created!

OLLI Monthly News in Wilmington
<http://www.oli.udel.edu/wilmington/newsletter/>
Osher Lifelong Learning Institute
at the University of Delaware in Wilmington
2700 Pennsylvania Avenue, Wilmington, DE 19806
(302) 573-4417

Editor Robert Ehrlich,
Associate Editors Mary Pat Elmlinger, Rebecca Worley
Associates Fred Hosier, Cree Hovsepian, Joel Roisman, Margaret Wang

Next submittal deadline: Friday, January 20

Issue date: Monday, February 6

Submit articles to rehlich@udel.edu.

Schedule Fall 2022

November 8..... Election Day
no classes, offices closed

November 22..... 11 week session ends
2nd 5-week classes end

November 23-25..... Thanksgiving
no classes, offices closed

December 9 End of fall semester

Spring 2023

February 6 Start of spring semester