



FROM THE OLLI DOVER COUNCIL CHAIR

Hi Fellow OLLI Members!

It is that time of the year when we look forward to summertime – when the “living is easy”. Hopefully, we have plans to make the most of the season. And how lucky that we can continue to enjoy our lifelong learning here in Dover during our summer session from July 8th to August 1st. We have a great variety of courses being offered.

Meanwhile, our committees are working hard preparing for a great fall semester as well. We have a total of 57 courses being readied for print in our catalog by mid-July. We are also working on three weekdays of luncheon speakers and events, as well as a back-to-school picnic, our fall luncheon and fall travel plans. Look for all upcoming events listed in the fall catalog.

In the meantime, we have preparations scheduled in August with dates to mark on your calendars. August 6 is our Open House and Walk-in Registration from 10:00 a.m. to 1:00 p.m. and August 20 is our Photo ID session from 10:00 a.m. to 11:30 a.m. in the Wyoming Church.

School opens on September 3, and we will repeat our Bring a Friend week during the week of September 9.

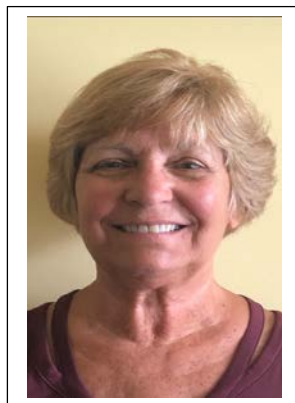
Dover OLLI Council is welcoming all members who would like to volunteer to teach or serve on any of our committees or other needs. Please contact Diana Faison or myself if of your interest. We value your input and observations. Please take notice of our bulletin board for upcoming events and announcements.

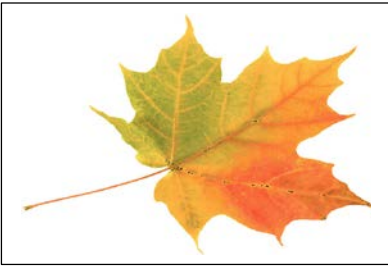
I want to thank our Council and committee members for the successful fiscal year that ended June 30. Our membership is continuing to increase for the new academic year starting in July with 94 summer session registrants.

A final thanks to all members who spread the good word throughout our community regarding our fabulous programs.

Happy Summer
Your OLLI Council Chair,

Rosemary Engle

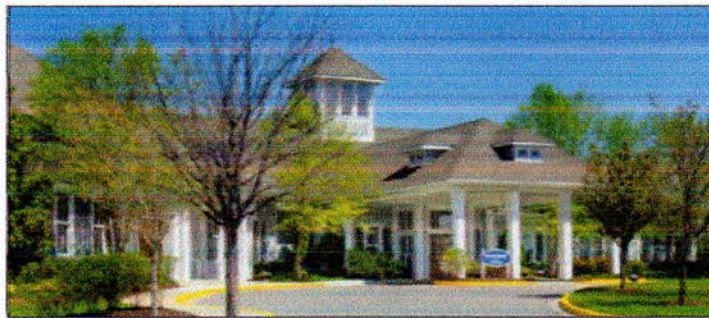




FALL 2019 CALENDAR OF EVENTS

Tuesday, August 6	Dover Open House, Walk-in Registration Wyoming United Methodist Church, 10 a.m. to 1 p.m.
Thursday, August 15	Priority Registration Deadline, 2 p.m.
Tuesday, August 20	Dover Instructor Orientation and UD ID Photo Session, Wyoming United Methodist Church, 10 – 11:30 a.m.
Monday, September 2	Labor Day, office closed
Tuesday, September 3	First Day of classes
Week of September 9	Dover “Bring a Friend” week
Tuesday, October 6	Second five-week session begins
Tuesday, October 15	Homecoming picnic at Cape Henlopen State Park, No classes
Friday, October 25	Dover – Trip to Library of Congress
Monday, November 11	Veterans Day, No classes
Monday, November 18	Last day of classes
Tuesday, November 19	Dover – Fall End-of-Semester Celebration, Wyoming United Methodist Church, 11:30 a.m. – 2 p.m.

NEW! OLLI IS COMING TO BRIDGEVILLE THIS FALL!



Join us for a great line-up of courses at beautiful Heritage Shores

Become an OLLI member at any OLLI Kent-Sussex location to sign up for unlimited classes at the new Bridgeville location, as well as Dover, Lewes and Ocean View.

Drawing Realistically (p. 7) · **Essential Oil Use** (p. 10)

Hamilton: The Man and the Musical (p. 11) · **Delaware?** (p. 12)

Everything Google: An Introduction (p. 22) · **Create Your Own Website with Google** (p. 22)

Drones—Know Before You Fly! (p. 29)

Heritage Shores Clubhouse, 1 Heritage Circle, Bridgeville, DE 19933



ATTENTION: **NEW DOVER OLLI POLICY**

Effective July 9, 2019

I am writing to inform the OLLI membership of new practices at Wyoming Church regarding coffee service. Due to several unfortunate incidents regarding liquid spillage and stained carpeting we find it necessary to limit coffee/tea/beverage drinking to NON-carpeted areas throughout the Church.

Those who choose to bring their own coffee must also adhere to these rules. For the Fall 2019 semester, the coffee setup area will be located in Room 233. Please consume your drinks and dispose of the cups in this room prior to going into the carpeted hallways and carpeted classrooms.

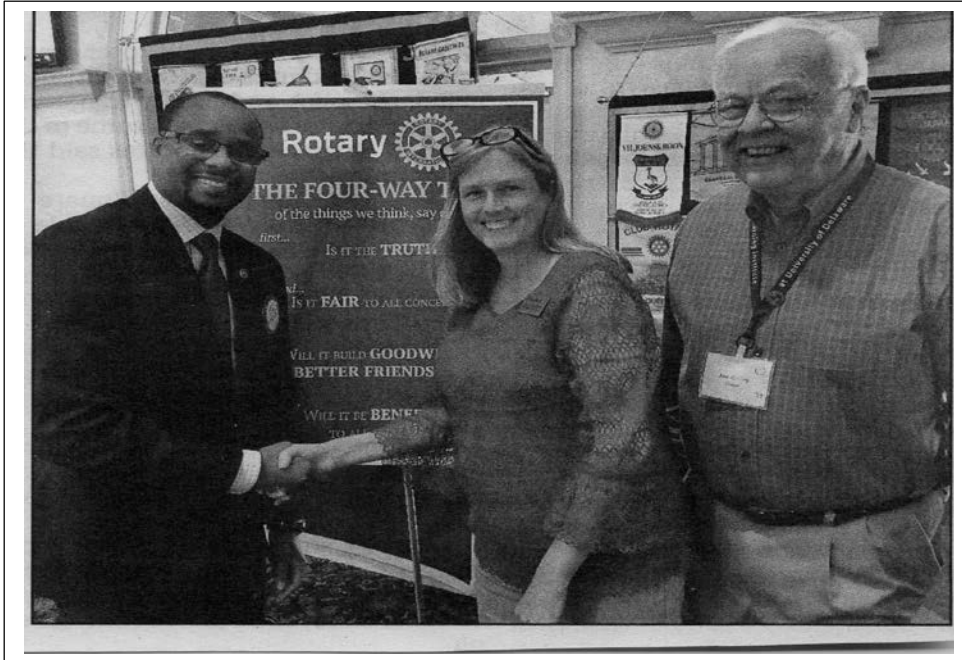
We are sorry if this is an inconvenience to you, but it is necessary in order for us to be responsible tenants. Please contact me if you have any questions, dsfaison@udel.edu.

Diana Faison
Administrative Assistant

DID YOU KNOW?

Did you know that a team of OLLI staff and volunteers make OLLI presentations in the community? If you know of a community organization that we can present to (Rotary, Women's Clubs, Church Clubs, etc.) please contact Anna Moshier (amoshier@udel.edu) with a contact person for that organization, and we will arrange a presentation.

Word of mouth is our best method of promoting OLLI.



Options for Giving to OLLI Kent County in 2019

As a member of OLLI-Kent County, there are several ways you can give back to your local OLLI program:

Annual Giving

Donors can make an annual gift or pledge payment to OLLI online, by mail (83 N. Main Street, 3rd Floor, Newark, DE 19716), or by phone (302-831-2104 / 1-866-535-4504).

Planned Giving

Individuals age 70 ½ and older can make direct transfers from IRA account to OLLI without having to count the transfers as income for federal income tax purposes. No charitable deduction may be taken, but distributions will qualify for all or part of the IRA owner's required minimum distributions. Donors can also transfer appreciated stock to benefit OLLI. For these giving options, please contact your financial advisor or contact the University of Delaware Development Office at 1-855-535-4504.

Mark Your Calendar – August 20
UD ID Photo Session at Wyoming United Methodist Church
10 – 11:30 a.m.

UD ID CARDHOLDER BENEFITS FOR OLLI MEMBERS

Here are some benefits that our members report with their UD ID card and/or UD email address.

- **Eduroam:** if you have a limited data plan on your smartphone or tablet, you'll want to use the Eduroam WiFi network at universities and museums around the world. That way you won't be using up your monthly data quota when you go to a website, check email or otherwise access the Internet.
- **Amazon Prime** for \$6.49/month – half the cost of the regular subscription
- **The NY Times** digital subscription at \$4.00/month
- **The Wall Street Journal** for \$100/year
- **Apple Store**
- **Academic Superstore**
- **Barnes & Noble UD Bookstore**
- **A C Moore** Arts and Crafts Store
- **JourneyED**
- Online access to the **UD Library's** hundreds of databases
- **Value Line** database of stocks and bonds would cost you at least \$695 a year to subscribe on your own
- **Ancestry.com**
- **Oxford World Art** database
- **Google Apps**
- Off Broadway Shows
- The **Barnes Museum** in Philadelphia
- More attractions and museums nationwide and abroad

If you find any other benefits please share with amoshier@udel.edu so we can keep an updated list

ALONG THE TRACKS – AUGUST 2019

By Joe Bailey

From Cute and Fluffy to Rats in Drag

In the summer of 1967 Connie and I moved from 2128 Grant Ave. in northeast Philadelphia to 208 Cooper Road in south Dover. Our rented house was at the end of a dead-end street and sat on about six tenths of an acre. There was a creek that ran along the back edge of the property and carried rainwater from the Rodney Village area into Moore's Lake. The property was wall to wall with tulip poplar trees. These trees drop leaves all year. They produce a flower which also drops. In the fall the leaves were two feet deep. Rather than rake the leaves we chose to ignore them. The downside to that was our Saturday morning wake-up call. The sound of the landlady's leaf rake scratching beneath our bedroom window.

We had no children at that time, so we acquired a black and white cat we called Patches. Cats are not highly socialized animals and Patches didn't seem to miss the lack of playmates. The next-door neighbor had a horse which she like to gallop near our property line. Patches was not pleased with these displays.

We had a few squirrels and Patches seemed to be fascinated by them. He would watch them climb trees and jump from one tree to the other. He seemed very impressed by their ability to go up a tree headfirst, turn around and come back down the tree headfirst. I was watching one day as Patches sat looking at the squirrels perform this magic. Suddenly the cat shot off to the nearest tree and climbed up about twelve feet, turned around and headed back down. Having no way to slow his decent and with his rear catching up to his head Patches leapt the last six feet to the ground.

We enjoyed the antics of the cat and squirrels. We bought pecans to feed the squirrels and one nearly became a pet. He or she would take the nuts out of our hands. The little critter would climb the back-door screen and would have probably come in the house if we opened the door.

After a year we bought a house in Smyrna that had been built on developed farmland. Alas there were no trees and, therefore, no squirrels. Twenty years later we moved back to Dover where our property has nut trees and squirrels; lots and lots of squirrels.

It wasn't long before they showed themselves to be the antisocial rodents they are. They chewed the rubber end caps off my hammock support frame. They chewed a hole in the rubber gas line for my grill. There is no way to prevent them from getting to the bird feeders without a skyhook or an ugly platform protected by a rat guard like ships use.

In the City of Dover BB guns, firearms, slingshots, bow and arrow, and no doubt other projectile launching devices may not legally be used. Lucky for the squirrels I am a law-abiding person. There is a strain of Virginia country boy in me and although I gave up hunting fifty years ago, I am still a decent shot with several weapons. In my mind I hold a Dogfish Head 90 Minutes IPA in one hand and a .22 pistol in the other and enjoy a nice daydream while posing no threat to the squirrels.



2019 Annual Report for the Member Relations Committee

Joe Bailey, Chair

The chief responsibility of the Member Relations Committee is to obtain and retain OLLI members. This is best done by word of mouth among the OLLI members and the contacts they make. The Member Relations and Community Relations Teams have merged to form one committee under the name Member Relations Committee.

The committee rents spaces at community events such as health fairs and senior expos and uses a member designed contact card to create a database of potential members to be contacted later. The committee helps with registration and ongoing member mentoring. Catalog production, and distribution are areas of participation. Press releases and quarterly newsletters are part of this committee's work. With the help of Anna Moshier and the management team we have been able to take a road show to organizations and clubs like the Dover Capital City Rotary.

All of this requires a lot of volunteers. We have been fortunate in Dover that when asked, well-qualified workers step up to the task.



2019 Annual Report for Academic Affairs / Curriculum

Ronnie Grady, Curriculum Chair
Phyllis Handler, Academic Affairs Chair

Dover OLLI had a busy year moving into our new location at the Wyoming Methodist Church. Despite the uncertainties regarding the change, we have settled in well with more than ample space, welcoming hosts and room to grow. We have in fact seen a growth in our membership from 156 in fall 2017 to 162 in fall 2018 and from 147 members in spring 2018 to 173 members in spring 2019. We offered 50 courses in the fall and 49 courses in spring 2019 and 23 courses for the summer session.

While we continue to marvel at the variety of courses offered by our outstanding instructors, a few will be mentioned here. "Hamilton: The Man and the Musical" was repeated by popular demand and offered in both Lewes and Dover. In March Opera Delaware graced us again with a musical preview of their spring season. A five-week class on "Human Trafficking in Delaware" was well attended and proved to be an eye-opening look into the underworld of the sex trade. The Thursday lunch time lectures continue to bring in community speakers on a variety of topics.

In the coming fall semester, we look forward to many new course offerings and, in particular, a new Wednesday series facilitated by Bob Heifetz called "Lunchtime: My Life's Journey: A Stop Along the Way" where members are invited to share some personal, humorous, or compelling true-life stories.

Although the Dover OLLI program remains the "small wonder", we are happy to enjoy a reciprocal arrangement with our downstate members and instructors who generously teach in both locations. We trust that they find us to be engaging learners and challenging thinkers. We look forward to this continued shared learning.

The Dover OLLI Academic Affairs Committee facilitated Instructor Orientation meetings prior to the fall 2018 and spring 2019 sessions. A smaller orientation session was held for new instructors in summer 2019. General administrative matters, technology issues and teaching tips were addressed. The committee also reviewed fall and spring student and instructor evaluations to provide insight into classes and address concerns that arise.



2019 SPECIAL EVENTS COMMITTEE REPORT

Marge Felty, Chair

Working with the Member Relations Committee, the Special Events Committee members helped with open house, walk-in registration in the fall and spring. The fall open house, registration was particularly well attended since members were curious about the new site. When we began OLLI classes, greeters were important to help everyone find their rooms in the new facility. Our committee members stepped up and worked willingly to make everyone feel comfortable and welcomed.

Planning and executing the end of session luncheons is the major responsibility of the Special Events Committee. This year we were so fortunate to have the use of the Family Life Center at the church which allowed us to have our luncheons on-site.

With the extra space we have been able to have a social hour before the potluck luncheons. There is time for guests to visit Sneak Peak exhibits, displays of students' work and at the spring luncheon there was a book exchange. Background music was provided by Slow Jam, an instrumental music group from Lewes, at the fall luncheon.

The Sneak Peak tables have given instructors a chance to showcase courses that will be offered in the next session. This idea was enhanced at the spring end-of-session luncheon with instructors, who chose to speak, giving a two-minute summary of their class.

The Silent Art Auction at the spring luncheon allowed artwork, that we are no longer able to display, find a new home. The sale of the artwork gave the committee seed money to be used for activities this year. A generous member donation paid for the current instructors' registration at the spring luncheon.

After each luncheon, the committee meets to discuss what worked well and what changes we need to make for the next time, always hoping to improve the event.

Susie McLaughlin and Rosemary Engle led the planning of the fall luncheon. In January, I took over as Special Events chair and shortly after that Bobbi Neaton agreed to co-chair. Several new members have joined the committee this year. The extra hands helped

SPECIAL EVENTS COMMITTEE (Continued)

make the successful transition to the Wyoming Methodist Church. Our committee is always looking for willing workers. We only meet as needed and try to limit the meetings to 1 – 1 ½ hours. Please contact me if you would like to help plan the 10th year celebration of OLLI Dover, Marge Felty wmfelty@netzero.com or (302) 242-1187.



2019 TRAVEL COMMITTEE ANNUAL REPORT

Madelyn Wright – Chair

Fall Semester 2018

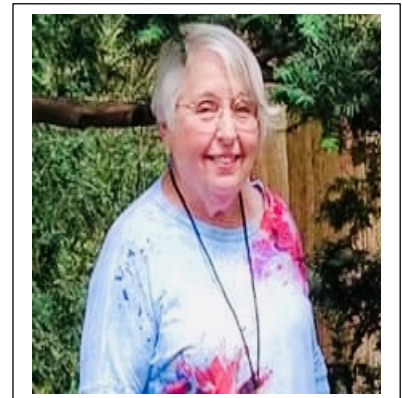
On October 19 a trip was taken to Hillwood Estates in Washington DC. Hillwood is the former home and gardens of Marjorie Merriweather Post. We toured the magnificent home, which houses her many acquisitions of French furniture and art, including Faberge. In addition, she also collected fine and decorative arts of imperial Russia. The cost of the trip (\$70) included the bus, museum tour and a box lunch.

At the request of Jan Miller, on November 30 we travelled to the Philadelphia Museum of Art. No tour was scheduled; everyone was free to roam and visit the collection of art according to their own interests. The cost of \$45 covered the bus and entry fee. Participants were on their own for lunch.

A 23- passenger Jor-Lin bus was hired for each of these trips.

Spring Semester 2019

Unfortunately, the trip planned for April to visit the National Air and Space Udvar Hazy Center in Chantilly, VA was cancelled due to lack of interest.



MEMBER VOICES

Submitted by Joe Bailey

One of the duties of the Member Relations Committee is to promote OLLI. Most OLLI members join in the hunt for OLLI stories. Sometimes we get national publicity. Recently a lady who was possibly recently widowed or divorced wrote to the editor of the AARP newsletter seeking ways to get back into life's adventures. One suggestion by the editor was to look into Osher Lifelong Learning Institute. Let us know if you see stories of interest about OLLI that we can put in the newsletter.

MEMBER VOICES

Submitted by Keith Malloy

LINDA MEDUNICK

Even though I knew it was coming, I was surprised at how unprepared I was when I was told Linda had died.

So many memories crammed into such a few short years. I first met Linda in September of 2016 when I enrolled in Drawing 101, my first OLLI class. Other than the course description, I had no idea what to expect.

I will always remember the very first day of Drawing 101. I thought for sure we were being punked! I kept looking around for the hidden camera - kept thinking, "this is a set up!".

After introduction, Linda gave a brief overview of the course and how she planned to cover topics. YouTube videos would be a large part of content delivery. First up, "Tools of Drawing", and with that, Linda tapped the wall, the Smartboard, to start the video. Nothing happened. She tapped again, stood back, and again nothing happened. Stepped forward, tapped twice in quick succession – nothing. Shrugged her shoulders and shook her head.

I suggested she tap on the right triangle on the lower right of the screen. Nothing happened. She tapped the wall in a different place. Again nothing. Next she tapped the wall twice. Then she banged on the Smartboard harder. By now, I thought no, this is one of those tests to see how people react in a given situation.

I approached the wall, tapped the play button and off we went. Linda thanked me, and that was the start of our friendship. Over the course of Drawing 1, Drawing 2, using Smartboard and Elmo, a laptop, a tablet, a notepad, a smartphone, and various other pieces of technology, Linda tried. Oh my, she tried tenaciously. She tried!

She just never could quite get the concepts. But she never gave up.

That is something I will always remember about Linda. Always respect about her. She would dive right into something, knowing she didn't know it all, and not let that scare her. If it did scare her, she did not let it stop her.

Linda was one of those people that made things happen. Things didn't always go according to plan, if there was a plan, but she pushed through. When many people would have found something too daunting, too intimidating, too much work, if Linda believed in something she just kept going. She pushed through.

I was constantly amazed at her stamina! She seemed to have reserves of energy stored somewhere because she took on so many projects at home, at OLLI, the Dover Public Library, at Pen Women, and the policing group she was a member of.

Each of those organizations had ancillary projects going on and Linda was chin-deep in all of them as well. Not as a member of the chair brigade but as one of the movers and shakers that actually *made* things happen!

Yes, sometimes that 'doer' got her into some hot water with others, but honestly, that is typical of ALL doers. It is just their nature. Linda was never one to be an armchair quarterback. No – Linda was a doer with a big heart.

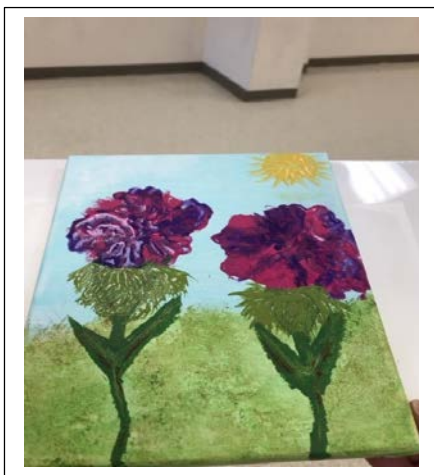
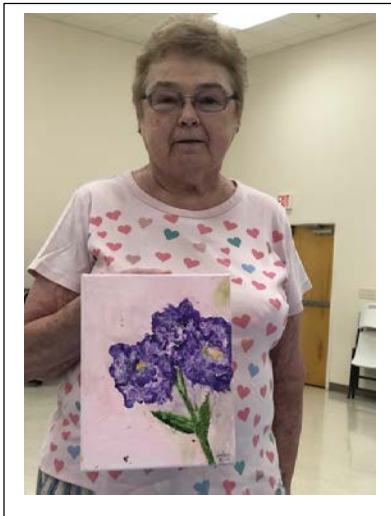
I, for one, am glad I had the opportunity to know Linda and call her my friend.

She would call me whenever she needed an ear or idea or just want to chat about something or brainstorm. Those were always fun conversations.

We shared many a laugh over some of the silliest things.

Linda, I'll miss ya.

Your friend, Keith Malloy



OSHER DOVER NEWS

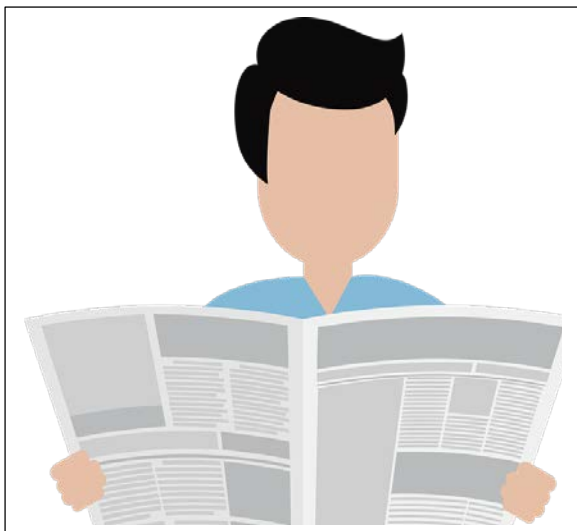
The *Osher Dover News* is published quarterly, with special editions as appropriate, for the information and entertainment of the members and those interested in lifelong learning. If anyone has information, news, pictures or items of interest to share, the Member Relations Committee wants to hear from you.

Co-Chairs: Joe Bailey & Pat Weaver

Photographer: Larry Klepner

Composition: Caroline Baxter

To submit items to the newsletter please email baxtercaroline1951@gmail.com or contact any member of the committee.



2018 – 2019 COUNCIL ROSTER

Council Chair – Rosemary Engle

Vice Chair - Pat Weaver

Secretary - Caroline Baxter

Council Members:

**Joe Bailey
Caroline Baxter
Rosemary Engle
Marge Felty
Ronnie Grady
Phyllis Handler
Bob Heifetz
Suzie McLaughlin
Pat Weaver
Madelyn Wright**

Committee Chairs:

**Administrative Assistance – Cheryl Moore
Academic Affairs – Ronnie Grady &
Phyllis Handler
Member Relations –
Joe Bailey & Pat Weaver
Special Events – Marge Felty
Travel – Madelyn Wright**

The Osher Lifelong Learning Institute (OLLI) at the University of Delaware is an all-volunteer organization established by the University of Delaware to provide intellectual and cultural development for people 50 years of age and older. Membership is open to all and is in compliance with the University's Equal Opportunity Policy