



The Tides...

Breaking News from
Lifelong Learning



Vol. 8, No. 5, 2018

Osher Lifelong Learning Institute at the University of Delaware in Lewes/Ocean View

From the Chair



We just completed a very successful June session. 254 members took advantage of 53 courses to start the summer in an interesting and productive way. Lee and I were only able to take classes the first two weeks – on US China relations (Chris Mark) and about what science tells us, or doesn't tell us about God (Doug Hemmick.) Both classes were terrific and thought provoking. Then we traveled to the South Shore of Massachusetts to see my family and eat New England style seafood. (Lobstah, lobstah everywheya!)

The big issue on everyone's mind is our lease extension and the status of planning for our future. Paul Collins will bring you up to date in his column in this issue (See page 4). I want to thank those of you who contributed to the spring annual campaign. From the last week of May through June we received \$5,280 all of which will be available to us for the building effort.

This coming March we will celebrate our 30th anniversary -- and celebrate we should. We have had a terrific run and are now bigger in membership with higher quality course selections than ever. I need to mention Howard and Alice Parker, two of the pioneers I got to know well. They both served on the steering committee to plan the organization of the new life-long learning program that was to open in Milford in 1989. Howard became the first council chair and Alice busied herself doing press releases and then filing them and any news coverage that resulted. Thus began our archives. Her work is still a valuable resource. Howard taught a course about industry in southern Delaware the first semester. Many years later, their hearing impairment made classes difficult, rather than grouching about it, they donated a podium with a mic.

Alice passed away at The Moorings about 2 ½ months ago at age 97. Howard passed away in 2011. We all owe a big debt of gratitude to the Parkers and those who worked with them for the strong foundation they built.

I thought you might find some figures about our membership growth interesting. These are the semesters in which we passed century milestones:

Continued on page 2



TERM	MEMBERS	YEARS TO ACHIEVE
Spr. '89	58	
Fall '93	120	3 ½
Fall '97	204	4
Fall '99	304	2
Fall '07	423	8
Fall '14	549	7
Spr. '18	614	4 1/2

Calendar of Events

- July 24-25 -- Lewes Open House, Walk-in Registration, 10 a.m.-1 p.m.
- Aug. 1 -- Twilight Cruise Up the Broadkill
- Aug. 16 -- Priority Registration Deadline
- Aug. 23 -- First State Ballet, Freeman Stage
- Aug. 29 -- Ocean View Instructor Orientation, 10 - 11:30 a.m., Ocean View Town Hall
- Aug. 30 -- Lewes Instructor/New Member Orientation, 10-10:30 a.m. coffee, 10:30-11:30 a.m. orientation
- Sept. 3 -- Labor Day - Office closed
- Sept. 4 -- First day of classes
- Sept. 12 -- Happy Hour, Big Fish Grill, Ocean View, 4 - 6 p.m.
- Sept. 26 -- Happy Hour at Irish Eyes Pub, Lewes, 3 - 6 p.m.
- Oct.3 -- Happy Hour, Big Fish Grill, Ocean View, 4 - 6 p.m.
- Oct. 7 -- Coast Day
- Oct. 9 -- Second session begins
- Oct. 10 -- Homecoming picnic - No classes

I have no idea why the growth rate has been so variable as we reached the first 300 in 9 1/2 years and 19 ½ years to get the next 300. Nor do I understand why we reached the 600 level in the spring when the snowbirds are gone.

Ponder these conundrums if you choose. Or simply enjoy the rest of the summer.

Thanks to George Dellinger and Suzanne Hain for another excellent job of coordinating OLLI's participation in this year's Rehoboth Art League Cottage Tour. This tour is its major annual fund raiser. For many years OLLI has sponsored one of the houses as a thank you to RAL for their support of our art programs over the years. It's an opportunity for OLLI to be seen in the community. So, thanks George, Suzanne and the more than 30 OLLI volunteers who staffed the house on July 10 & 11.

Catalogs have been mailed so you should be relishing the delicious smorgasbord of courses for the fall semester. See you in September.

Bill

Your OLLI Council and Staff for 2018-19



Front row L-R: Renee Moy, Program Coordinator; Anna Moshier, Manager, Osher Learning Centers; Karen Schaub, Finance Chair; Bill Sharkey, Council Chair; Paul Collins, Development ; Lynn Kroesen, Communications/Newsletter Chair; Connie Benko, Social Chair; Kathy Henn, Council Secretary

Back row L-R: Robert Comeau, Ex-Officio; Peter Feeney, Vice Chair; Joan Sciorra, Travel Coordinator; Gerri Stephenson, Community Relations; Bud Zimmerman, Academic Affairs Co-chair; John Lafferty, AV/IT Support Staff

Not pictured: Craig Haggerty, Community Relations Chair; Sabatino Maglione, Scholarship Chair; Jane McGann, Academic Affairs Co-chair; Ruth Barnett, Librarian/Archivist; Bill Ashmore, AV/IT Support Staff; Joe Zito, AV/IT Support Staff; Chet Poslusny, AV/IT Support Staff

OLLI Open House and Walk-in Registration July 24 & 25

OLLI in Lewes has scheduled its Open House and Walk-in Registration for July 24 and 25 from 10 a.m. to 1 p.m. at the Fred Thomas Building, 520 Dupont Avenue in Lewes.

All OLLI members are invited to attend and bring a prospective member. Refreshments will be available and OLLI instructors will offer brief overviews of their upcoming Fall courses and answer any questions that you may have.

Submitted by Connie Benko, Social committee

Development Committee Report -- Update on Future Plans

The Development Committee was formed earlier this year in anticipation of losing our lease at the Fred Thomas building in the next year or two. Our objectives are to identify a preferred location and specific facility requirements, and then to raise the necessary funds to support the building or renovation of that facility. We assembled a group of highly talented and dedicated individuals to pursue these goals.

We created a basic facilities requirements document reflecting our assessment of our current situation, projected growth, and the results of the membership survey. Our current projection is the need for 10,000 square feet in the new facility. After looking at potential locations and speaking with other organizations we believe our best solution is to construct a new facility on the Sharp Campus of the University of Delaware College of Earth, Ocean, and Environment in Lewes. There are many advantages to this alternative including space for parking and being able to utilize the University for maintenance and support. We have met with the Dean of the college and Director of the campus and they are supportive of the concept. Our next steps are to pursue support with the new Provost, Robin Morgan, and then with President, Dennis Assanis. We are working with TJ Cournoyer, Senior Director of Development, and I.G. Burton, a Trustee and Sussex County Councilman, to get our message to the administration.

We will provide updates as the process moves along. Thanks to everyone who responded to our survey and to those who have donated to the OLLI Future Fund.

Paul Collins, Chairman

OLLI Upcoming Trips

First State Ballet, Freeman Stage

August 23, 2018

Event is free. Open to OLLI members and instructors only.

Hillwood Museum and Gardens, Washington, D.C.

October 19, 2018

Bus departs from Dover.

For additional information, contact the OLLI office at 302-645-4111 or email Rmoy@udel.edu. The OLLI office is open Monday – Thursday from 9 a.m. – 2 p.m.

Picnic Time

Mark your Calendar --- Wednesday, October 10, 2018

The 20th Annual Homecoming Picnic

Cape Henlopen State Park



OLLI Docents – Best Team Ever for RAL’s 2018 Cottage Tour

On July 10th and 11th, OLLI fielded four shifts of docents to guide RAL Cottage Tour visitors through the Palmer/Scott home. Not only did OLLI get a wonderful cottage full of amazing art, our docents were gracious, well-versed, and guided RAL’s visitors through the Palmer/Scott home with enthusiasm.

The owners, Bruce and Jason, commented, “We really appreciated how informed and respectful the docents were about our home and art collection and were amazed at how they energized the visitors”

To all 35 OLLI Docents, thank you for volunteering and for being gracious hosts:

Valerie Reber	Eileen Bohan	Kathy Ackerman	Carole Moody
Bill Monaghan	John Coleman	Bob Ackerman	Bill Moody
Joyce Monaghan	Carmela	Bill Sharkey	Trudie Thompson
Terry Scott	Coleman	Lee Mussoff	Ann Reese
Katherine Henn	Janet Koch	Alan Chalk	Ron Reese
Cindy Whitacre	Jenny Waters	Loretta Feeney	Faith Duncan
Joan Sciorra	Clive Getty	Pete Feeney	Diane Pollisino
Audrey McMeekin	Kathy Boboshko	Jill Hicks	Jane Tantillo
Lori Bernstein	Ellen Neumann	Elaine Masterson	Carol Norman

We’re taking reservations now for 2019. Docenting is fun and supports a good cause. RAL offers their pottery studio to OLLI for our classes and, in appreciation, we sponsor a "Cottage" during their tour. This has been a successful collaboration for more than 18 years and is now expanding to include more courses on both campuses. Sign up now for next year. Call OSHER, 302-645-4111, and give Renee your name. It’s fun and you get to support this worthy cause.



Audrey McKeekin in the Dining Room with the gorgeous centerpiece made by the owner, Bruce Palmer



Above: The Living Room area with Joyce Monaghan in foreground and Valerie Reber at the front door (fourth from left) inviting guests in.

Submitted by Suzanne Hain

Register Now for Fall Semester

Priority Registration Deadline is August 16

Fall semester classes begin Tuesday, September 4 and there is a wonderful line-up of classes to choose from. For the Lewes/Ocean View area there are over 100 classes including 47 new offerings. In addition there are over 50 Dover area classes listed in the catalog. There are over 12 different categories of courses. These include Art, Economics/Finance, Health/Psychology, History, Humanities, International Studies to name just a few. Why not try something new?

The History department has 28 offerings, 22 of which are new. Learn about the Life and Legacy of Robert Kennedy or the DuPonts or Ellis Island Immigrants or the Impact of Political Cartoons on American History.

In Humanities you can study Walt Whitman's poetry or the Hollywood Italians or The Joy of Children's Literature.

Check out the Technology department to learn how to take better photos with your iPhone or use you iPhone to make holiday cards or become familiar with Cybersecurity and How to protect yourself.

For art and crafts lovers there is Basketry, Stained Glass and Painting.

Most of the classes are held at the Lewes Campus at the Fred Thomas Bldg. or at the Ocean View Town Hall and Community Center but we are also utilizing space at some other locations in Lewes in order to reduce the wait list and improve parking availability. Be sure to check the location as you make your class selections. You can also sign-up for classes held in Dover at the Wyoming Church site.

The catalog has been mailed so take some time to review the choices and register online at www.oli.udel.edu/fall2018 or by mail or in person at the Lewes office.

We welcome you to come learn, have fun and make or renew friendships. Remember the deadline for priority registration is August 16. Registrations received after August 16 will be processed on a space available basis.

See you in September!!!

Submitted by Academic Affairs Committee



Special Speaker Thursdays

12:30–1:15 p.m.

Join us on Thursdays this fall to listen to and interact with interesting speakers who will discuss a wide array of topics. These programs are free for members. You are welcome to attend every program or select the ones that most interest you. Bring a lunch and enjoy!

(Schedule is subject to change.)

September 6

Wayne Kirklin, retired college professor with an interest in maritime history.
“Maritime Bits” – Sailing vessels over the past 350 years

September 13

Dennis Reardon, Lewes City Council
Annexation and Zoning in Lewes

September 20

Lea Rosell, Lewes Library Opportunities

September 27

Dr. Gary Wray, President, Fort Miles Historical Assoc.
Fort Miles: Yesterday, Today and Tomorrow

October 4

Heath Gehrke, Director of Ferry Operations
Delaware River and Bay Authority

October 11

Sterling Street, Nanticoke Indian Nation

October 18

Catherine Hester, Teller Wines in Lewes
History of Teller Wines

October 25

Phil Martin, Milton Historical Society
History of Milton

November 1

Dogfish Head Brewery
History of Beer



Partial Scholarships Available for Fall

The Charmaline K. and George Kirilla Jr. Scholarship Fund together with voluntary contributions by members will continue to provide partial scholarships (up to half tuition, for a single semester) for this fall semester. Qualified applicants are encouraged to follow the guidelines of the scholarship process as cited on the application form. Please complete the [Scholarship Application form](#), available on the OLLI website www.oli.udel.edu and mail or deliver to the office by August 2.

Submitted by Sabatino Maglione, Scholarship Chair

Volunteer Opportunities

The OLLI Community Relations Committee will be assisting in three events and will be in need of OLLI volunteers. These events are a great opportunity to spread the word about Osher. Please mark your calendars and consider joining fellow students for any (or all) of these events.

October 7, 2018 -- COAST DAY held at the University of Delaware's Hugh R. Sharp campus in Lewes. The theme this year is "Science Serving Coastal Communities"

November 3, 2018 -- EXPO 55 at Cape Henlopen High School

December 1, 2018 -- Lewes Historical Society's Christmas House Tour

For more information, contact Gerri Stephenson 302-227-2651
gerristephenson23@comcast.net or the OLLI Lewes office.



OLLI OLLI IN FREE

Did You Hear That?!!

“Honey, can you turn on the news?”

“What? You want money for booze?”

“No. I said turn on the news, honey.”

“Oh. You earned some Blue Bunny? I thought we agreed to stay away from ice cream.”

And so it goes...Our hearing is not what it used to be! I actually went for a hearing test not too long ago. I went mostly because it was free, and just for going, I got a 20 dollar gift certificate to the restaurant of my choice.

I did find out that I have some hearing loss in both ears, but not enough to warrant expensive hearing aids yet. Besides, the hearing tester woman told me the loss in my left ear was in the low tone range, and the loss in my right ear was the high-pitched tones. So my left ear hears what the right ear can't, and my right ear hears what the left ear can't.

So for now, when my husband mumbles or talks to me from the other side of the house, I'll just have to keep guessing what he says.

Seriously, if you are having trouble hearing in a group setting like at a restaurant, or your spouse/partner has told you that you are having trouble hearing, there are two places in Lewes that give free hearing screenings:

International Hearing Systems on Savannah Road at Five Points across the street from the CVS, and Miracle Ear Service Center at 18462 Plantations Blvd.

Submitted by Patty Perreault Bennett

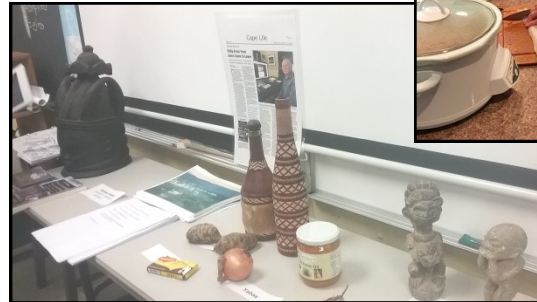


June Session Students Get a Taste of Africa

Instructor Phil Fretz who spent two years in Sierra Leone, West Africa with the Peace Corps shared pictures, memories and the typical cuisine with OLLI members registered for **African Cuisine From East and West Africa**. Phil shared the letters he wrote to his father and the pictures he took while he lived there, which he also used as the basis for his first published book. Class members tasted Fish Soup and Palaver Stew and marveled at ceremonial headdresses and the West African artifacts (Pictured right).



Class members were also treated to pictures and memories from James Welch, (Pictured left) a Peace Corps alumna who was posted in Ethiopia during the 1970's. James and his



Top: Phil prepares Fish soup

husband Ivo Dominguez, Jr prepared various types of "wot", thick meat and/or vegetable stews and a large sourdough flatbread made of teff flour that is normally used to scoop up the entrees and side dishes from a common dish (Pictured left). The class tasted Kik Aicha, yellow split pea stew, Misir Wot, red lentil stew, and Key Sir Aicha, beets with potatoes.



Both Phil and James have recently taken trips back to their respective posts and reported on the changes or lack of change they observed but both agreed that they were greeted warmly and treated like family.

Photos by Lynn Kroesen

Join Us For Happy Hour!

Do you want to get to know some of the other people in your classes? Meet new friends and renew old friendships. Come to the Happy Hour at Irish Eyes Pub & Restaurant on the Lewes Canal, 213 Anglers Rd, Lewes, DE. on Wednesday, September 26, Wednesday, October 24, and Wednesday, November 28, 3 to 6 p.m. Or meet us in Ocean View at Big Fish Grill, 30415 Cedar Neck Road on Wednesday, September 12, Wednesday, October 3 and Wednesday, November 14, 4 to 6 p.m.

There will be a Cash Bar.

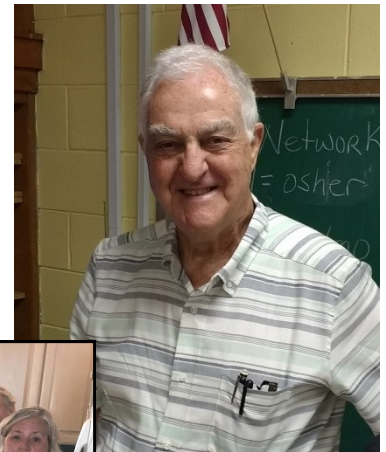
Submitted by Connie Benko, Social Chair



June Session Highlights



English Country Dancers at the Dover Ball



Instructor Royce Haynes, Solving Problems in Standard Big Bang Cosmology



English Country Dance End of June party and dance



Patty Bennett entered this Dripped Chip & Dip Set into the Delaware Technical Community College Senior Art Exhibit. She threw the two pieces on the pottery wheel at the Osher class taught by Carmela Coleman, and won First Place in the Novice Division. Submitted by Patty Bennett



Garden beautification thanks to George Dellinger



Christopher Mark, left, instructor, U.S. - China relations at a Critical Juncture

Photos by Carol West, Anna Moshier, Lynn Kroesen

June Session Highlights



June session members learned how to make **Fabric Jewelry** from instructor Diana Beebe (pictured right) and how to play **Contract Bridge** from instructor Eileen Zampini (pictured below).

Left: John keeps our AV equipment functioning properly.



Photos by Lynn Kroesen

OLLI in Lewes/Ocean View is a vital and vibrant part of our members' lives. Consider promoting lifelong learning with a charitable gift to OLLI. Checks can be made payable to **University of Delaware** with a note that the contribution should be directed to Osher Lifelong Learning Institute in Lewes/Ocean View.

Mail your check to:

University of Delaware
Development & Alumni Relations
Gifts Receiving and Processing Office
[83 E. Main Street, 3rd Floor](#)
[Newark, DE 19716](#)

or

Osher Lifelong Learning
Fred Thomas Building
[520 Dupont Avenue](#)
[Lewes, DE 19958](#)

You may also give online at www.udel.edu/makeagift or by calling the Development Office at [302-831-2104](tel:302-831-2104).

When you give back to OLLI, you make members' dreams possible, the University of Delaware stronger and our community stronger. No matter how big or small, every gift truly matters.

In Remembrance of



Jane G. Govatos, 75, of Lewes, who was one of the first licensed nurse practitioners in the state of Delaware, died May 22, 2018, at Beebe Healthcare in Lewes. She was born in Wilmington Jan. 30, 1943, attended St. Peter's Cathedral School and graduated from Padua Academy in 1960. She was also a 1963 grad-

uate of St. Agnes Hospital School of Nursing in Baltimore, MD. Jane went back to school, earning her B.S. in nursing from Wilmington University in 1993 and a M.S. in nursing at UD in 1995. She also taught nursing at Wilmington University. Jane worked for 23 years throughout the Lewes region as a family nurse practitioner, most recently with Beebe Physician Network. She retired in September 2017.

She began her career as a nurse at The George Washington University Hospital in Washington, D.C., where she met her husband Wayne Robbins. They moved to Montreal, Canada in 1969 where they raised their son Sean, and where Jane became fluent in French. She worked as a nurse in the operating room at several area hospitals.

In 1989 Jane left Montreal and returned to Delaware. She settled in Lewes and reconnected with her first cousin, Mig Reardon. The two, who had grown up like sisters, spent summers together in Rehoboth. Jane, who had taken a memoir writing class at OLLI, had recently read a special remembrance of those times at the Rehoboth Writers' Guild's Night of Songs and Stories.

Her death was sudden and unexpected following routine surgery, and she will be greatly missed by all who knew and loved her.

Funeral Services were held June 7 at St. Peter's Episcopal Church in Lewes.



Patricia Keenan Porta, age 78 of Lewes, DE, passed away on Tuesday, July 10, 2018, at her home after a short illness. She was born March 17, 1940, in Cleveland, OH.

Patricia graduated from St. Francis School of Nursing in Pittsburgh, PA, in 1961

and earned her BSN from Rutgers University in 1978. She enjoyed a career as an occupational health nurse that spanned many years, with both AT&T Bell Laboratories and Lucent Technologies. On November 25, 1961, she married the love of her life, Robert Charles Porta, in North Canton, Ohio.

Mrs. Porta loved to travel. She was a skilled knitter, enjoying other needlework as well and an avid reader. Mrs. Porta was a dedicated and active member of St. Jude the Apostle Catholic Church and a faithful volunteer for Coastal Concerts.

She is survived by her beloved husband of more than 56 years, Robert C. Porta of Lewes; her four children; five grandchildren and her brother.

A Mass of Christian Burial was held on July 18 at St. Jude the Apostle Church, in Lewes

In lieu of flowers, the family suggests contributions in Mrs. Porta's memory to a charity or nonprofit.

Web Address: www.oli.udel.edu/lewes/