



The Tides...

Breaking News from Lifelong Learning



Osher Lifelong Learning Institute at the University of Delaware in Lewes

Summer 2012

Fall Classes to be Offered in Lewes and Bethany Beach

Fall classes will begin September 10 at both the Lewes location and our new Bethany Beach location, with a grand array of 66 courses. Eight of the classes will be at the Bethany Beach Municipal Building.

As has been our good fortune, many of the courses will be extensions of subjects our excellent instructors have offered in the past, covering art disciplines, computer skills, history, economics, literature, humanities, international studies, food, the performing arts, music, psychology, social studies, and recreation and fitness. What a marvelous range!

In addition, we will have exciting choices among entirely new subjects. To name just a few, Caryl Williams is offering a drawing class on the three basic forms, cubes, spheres and cylinders. Ellen Notar will give us a history of Women Artists, and in Bethany Charlotte Smith will teach art appreciation. Join Rick Grier-Reynolds in "Designing a Sustainable Future: a New Economy as if People Mattered." In the field of history, we will have new classes on United States Immigration (Eileen Redden), London (Phil Fretz), and Ireland (Rosemary Cummings, in Bethany).

In literature, delve into Cervantes' Don Quixote with Sabatino Maglione, Arthur Miller with Gary and Margo Ramage, or the poems of Francois Villon with Jan Feidel, or Garrison Keillor with Jim DeCatur. Karen Wexler will share a personal account of her journeys in spiritual India, in "Ashrams in India."

Musical offerings will run the gamut, with jazz (John Nammack), opera (Pat Mossel), musical masterpieces on the light side (Jon Newsom), and a history and appreciation of music (Jon Woodyard).

Jo-Ann Vega will explore changing demographics in our nation in "Beyond Red and Blue," as well as vital documents in the National Archives. A few other fascinating new arenas: genealogy (Shirley Herndon), cutting and sewing furniture cushion covers (Maureen Thomas, in Bethany), family and friend support (Deborah Brown), and sustainable energy (Bill Fintel).

These are a fraction of the wide array of subject matter for the Fall academic season. The catalogue, containing detailed descriptions of all courses, is available on-line now at www.lifelonglearning.udel.edu/lewes, and members may register by mail or in person at the Lewes office. We urge you to look over the available selections and line up your priorities.

Priority registrations must be in by August 23. It promises to be an exciting term.



Photo by Maureen Sherlock



From the Chair

We rounded out a successful academic year with 22 courses in our June session before taking a summer vacation. Now, we're preparing for a busy fall semester, with a record 66 courses! As always, some will be held off-site at Cadbury, the Rehoboth Art League and at instructors' homes – but, based on the enthusiastic turnout for last January's Bethany lecture series, we're also offering eight courses in the Bethany Beach Municipal Building & Community Center. They will be held on Monday and Wednesday mornings, so plan your registration carefully. The fall catalog is on our website, and will be in the mail any day now.

The new online registration system being developed for us is not yet ready for prime time, so we'll have to do things the "old-fashioned way" this fall. We hope to launch the new system in January. That will also simplify the trip sign-up process; meanwhile, the Lewes School bulletin board is the vehicle we must use – but we'll alert you by email when a list is going to be posted.

This fall, we'll have some new neighbors. Shields Elementary is bursting at the seams, so the fifth graders will have their classes in the Lewes School. They'll be on the second floor and their schedule, coming and going from Shields, has been adjusted so there shouldn't be a traffic problem; just be aware.

We have some personnel changes. With the Council's approval, I've appointed **Mary Folan**, longtime travel co-chair, to replace **Anne Carol Finley**, who has resigned after four years of service. Welcome, Mary, and a heartfelt thank you, Anne Carol. The Council has elected Mary as Secretary, replacing Donna Beecher, who was elected Vice Chair.

Also retiring after seven years handling external publicity is **Ruth Mankin**. Ruth's talent and hard work have kept an important written and photographic presence for OLLI-Lewes in the local media, helping us to grow in membership and attract new instructors. Please give Ruth a well-deserved "atta-girl" when you see her in class!

Bob Comeau, Chair

Calendar of Events

- Aug 6 — Fall catalogs mailed
- Aug 23 — Priority registration for fall closes
- Sept 6 — New member/Instructor orientation
 - 10:00 - Coffee Social
 - 10:30 - Orientation Program
- Sept 10 — First Day of classes
- Oct 15 — Second 5 weeks begin
- Oct 26 — Opera Delaware at Cadbury
- Nov 6 — No classes - Election day
- Nov 12 — No classes - Veteran's Day
- Nov 20 — Last day of classes



Check-Mate — New Chess Sets

The National Chess Association has donated 5 chess sets to us.

Contact Anna if you would like to use these sets for a game.



Mark your Calendar

Nov. 28 — Instructor Recognition Luncheon

REMINDER

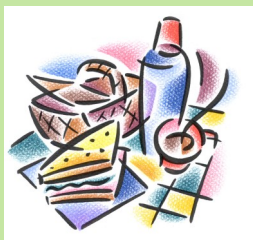
The office is closed on Fridays.

Your Council for 2012-2013



Members of Osher Lifelong Learning Institute at the University of Delaware in Lewes recently elected new officers to their leadership council. Front row seated (L-R): Louise Archdeacon, Librarian/Archivist; Diana Beebe, Academic Affairs Co-Chair; Robert Comeau, Chairman; Jack Boettger, Finance Chair; Anna Moshier, Program Coordinator. Standing (L-R): Bo French, Long Range Planning; Joan Sciorra, Travel Chair; John Coleman, Academic Affairs Co-Chair; Lynn Kroesen, Communications Chair; Renee Moy, Administrative Assistant; Bernard Fiegel, Social Committee Chair. Not pictured: Donna Beecher, Vice Chair; Frank Meredith, Community Relations; Mary Folan, Secretary.

Annual Picnic Canceled



The 14th Annual Homecoming Picnic scheduled for October 8, 2012 at Cape Henlopen State Park has been canceled. Park officials have closed the pavilion, effective October 6, 2012, for the remainder of 2012 to replace the roof and

additional maintenance. No other venue was available area wide that could accommodate us; and many were investigated. We'll be first in line to reserve it for October 2013. Sorry for any inconvenience this may cause.

The Picnic Committee.

Reminders :

- In order to keep the cost of beverages low, please remember to pay for what you take. Coffee, bottled water and soda are 50 cents each. Instructors are entitled to one free beverage on the day they teach.
- The second floor of the Lewes School is off limits to Lifelong Learning members.
- Wear your badges at all times when in the Lewes School. See Renee if you forget your badge.



Instructor In the Spotlight

Each newsletter we are going to spotlight one or more of our talented instructors. Learn more about the men and women who prepare and bring us interesting, stimulating and challenging classes.

Amelie Sloan is another of our longest serving instructors (over 30 semesters). Amie is a native Delawarean and a retired elementary school teacher. She has always been interested in ceramics and pottery and was encouraged to practice her talent at a very young age by an Aunt. Later a teacher at the Rehoboth Art League (RAL) encouraged her to continue to experiment with her interest in masks. In 2007 she participated in a show at the RAL in which she exhibited her masks and pottery pieces she had been perfecting since the 1970's. In 2008 a book of photos of her work from her show was published. Although Amie still attends classes, she has recently turned over the teaching of the pottery classes to some of her former students.

Amie was surprised by her students with a gift on her 93rd Birthday in February.



One Fee—Two Locations

Classes on a wide array of topics will be offered in Bethany Beach starting this September as part of the fall semester at Osher Lifelong Institute at the University of Delaware in Lewes.

Classes including history, art, poetry, humanities and life style topics will be offered on Monday and Wednesday mornings for a 10 week semester starting September 10, 2012 at the Bethany Beach Municipal Building and Community Center at 214 Garfield Parkway in Bethany Beach.

“We are pleased with the tremendous response we have received from the community to our plans to grow in the south coastal area,” says James Broomall, Associate Provost for professional and continuing studies at the University of Delaware. “The hospitality of the Town of Bethany and the support of local volunteers have helped make this new endeavor possible.”

“We have an interesting and diverse lineup of classes scheduled for the fall in Bethany and since it is part of our Lewes program, members pay one fee to join and can take classes at both locations,” says Broomall. Members of the Lewes program pay a fee to join for the year or the semester and are entitled to take classes in both Bethany and Lewes locations.

Submitted by Carrie Townsend

Attention — New Travel Policy

Nonmembers will be charged a \$10 per day surcharge for OLLI-sponsored trips, beginning September 10, 2012. Nonmembers are persons who are not personally registered for the semester during which the trip is posted.

Notify the Office

- ⇒ Please notify the office of any address change (mailing, phone or email).
- ⇒ Notify the office if you would prefer to view the catalog online and not to receive a catalog in the mail. This will save us the cost of printing and mailing and you will see the catalog earlier. View the catalog at our website: www.lifelonglearning.udel.edu/lewes.

**Check Bulletin Boards for
“Happenings”**

May Trip to DC — Something for Everyone



Photo: Thanks to Sandy Moore

Many of us spent the overcast, rainy day on May 21 viewing the vast collection of both the Portrait Gallery and the Smithsonian American Art Gallery. Both tell the story of America. The building itself is one of the first public buildings constructed in Washington, DC. Abe Lincoln's inaugural ball was held here in 1865. Kogad Courtyard with its glass canopé designed ceiling is something to behold and one to enjoy while having a bite to eat.

Some members of the group did venture out to the National Art Museum, some made a return trip to the Spy Museum and others went to Chinatown. An enjoyable day was had by all.

Until our next motor coach adventure,

Your travel committee.

Submitted by Joan Sciorra



JUNE 9 TRIP TO ARENA STAGE IN WASHINGTON, D.C.

Lee Mussoff's informative and lively lecture of Meredith Willson's life and his score of *The Music Man* plus the music of *Seventy-six Trombones* pumped up Osher travelers' enthusiasm for the show they were about to see. Did you know that *Goodnight, My Someone* is the same tune, in waltz time, as the march-tempo of *Seventy-six Trombones*? Kate Baldwin as Marian, the librarian, commanded the stage from her first entrance and Burke Moses as Harold Hill with his booming baritone voice began the show with *Ya Got Trouble*. Arena Stage's production with its highly energetic choreography and equally talented cast did not disappoint; theater in the round afforded everyone a great view of the show. Travel coordinators, Dolores Fiegel and Joan Sciorra, received many positive comments from happy travelers on the return trip home.

Submitted by Dolores Fiegel



Ahoy there Osher-mates

Salty says mark your calendar for Wednesday, November 28, 2012 to partake in the Instructors' Recognition Luncheon! The OLLI Queen will be out of dry dock with a fresh paint scheme and will set sail down Rehoboth Bay, drop anchor at the Rehoboth Beach Country Club, depart the ship for the second floor of the beautiful club house to enjoy a delicious lunch, members' arts and crafts, the view, the view, the view, and the Elder Moments. The change in venue should be exciting to all ... so "all hands on deck" and join us and all the other Osher-mates on Wednesday, November 28, 2012, at the Rehoboth Beach Country Club!

Library Materials Ready for Fall

As we look forward to our new fall semester, I would like to invite everyone to browse our library shelves to find books, CD's and videos that may interest you.

In the spring semester some of us watched DVD's titled Great American Best Sellers: The Books that Shaped America. These lectures are fascinating and you can find the set at 028.1.

For the beauty of old maps, be sure to see Decorative Printed Maps of the 15th-18th Centuries. This stunning book is located at 912.

At 936.23, see Stonehenge: A New Interpretation of Prehistoric Man and the Cosmos; and for all the recent new residents to Delaware, you will want to read A History of the C & D Canal—find it at 386.46.

Lastly, to support our classes on humor, you must check out the CD's Funniest Moments of Comedy at 791.45, and Victor Borge's Classic Collection on 6 CD's located at 786.2.

We thank everyone for their wonderful donations to our library, and if you have borrowed any materials, please try to return them as soon as possible—many thanks.

Louise Archdeacon
Librarian

2012 COTTAGE TOUR

On July 10 and 11, Osher Lifelong Learning in Lewes hosted the home at 339 Hickman Street in Country Club Estates, Rehoboth Beach, as a featured home on the 2012 Rehoboth Art League Cottage Tour. We tallied 1,014 visitors to the house during the two-day event.

To the many members who volunteered their time to act as docents, we extend a hearty thank you. We received many compliments about your knowledge of the house and especially about your courtesy in sharing information with the visitors. You have made us proud, as usual.

Built in 2009, the house mirrors the very active involvement and personality of the owners, Deb Ward and Marie Murray, especially with regard to its welcoming feel. The ground floor flows through a large, "compatible cream" great room and kitchen area, into a spicy paprika dining area, titled "peppery," and thence into a screened porch and unique outdoor kitchen and entertaining area.

The numerous special features in both the indoor and outdoor kitchen and dining facilities reflect Deb and Marie's enthusiasm for entertaining: pentagon-shaped kitchen counter, perfect for buffets; several wet bars; cooking stations with two grills; even a small outdoor refrigerator.

Upstairs, wall colors are varied and vibrant: "ravishing coral," "stirring orange," and "sundance" (a bold yellow), in the three bedrooms, and "brave purple" in their office; and the art in each room complements the décor dramatically. One of the bedroom suites includes adjoining "Jack and Jill" separate bath facilities, with bright, colorful flip-flops, and even a flip-flop wreath, decorating the walls.

In short, it was a delight to have the privilege of hosting this warmly inviting home.

John and Carmela
Coleman



Suggested Subjects for Future Courses

Throughout our lifelong learning history we have enjoyed an increasingly broad range of subjects among the courses that have been offered here. In that spirit, members frequently express a particular interest in new areas, and we have compiled a list of those suggestions in the hope of encouraging members with relevant background to follow up with a proposed class.

The current list of suggested subjects includes:

Alternative energy	Ecology	Meteorology
Antiques	End of life issues	Oceanography
Architecture	Environmental science	Pollution in the
Art history	Epidemiology	inland bays
Astronomy	Fishing	Public transportation
Aviation	Gardening	Tennis
Beginning electrical	Gerontology	Travel
Bridge	Golf	Wind power
Chemistry	Health	Woodworking
Civil rights	Interior design	Writing
Conservation	Italian immigration	WWII history
Delaware Indians	Jewish history	Yoga
Delaware underground railroad	Labor union history	



This is by no means a fully inclusive list of our membership’s interests. The sky is literally the limit! So, in addition to encouraging members to consider initiating a class in any of these subjects, we urge you to continue to let us know of any other disciplines you would like to know more about or, even better, share with us as an instructor.

Free Legal Advice for Seniors

There is a new resource available for Delawareans who are age 60 and older. The Senior Legal Hotline is now up and running. The hotline hours are 9 am – 4:30 pm, Monday – Thursday. The phone numbers are: 302-478-8850 or 800-773-0606 (Kent and Sussex Counties).

Callers can receive free legal advice on a variety of issues. There are no income requirements for the hotline. The advice will be provided by either a DVLS staff attorney or volunteer attorneys. If the issue requires more than advice, the caller will be screened for free legal services and, if eligible, will be referred to CLASI, DVLS or the Legal Services Corporation of Delaware (LSCD).

Turn Off Those Cell Phones, PLEASE



PLEASE turn **off** your cell phones while in classes as a courtesy to your fellow students and the instructor.

HANDICAP PARKING

Vehicles parked in Lifelong Learning marked spaces must have a valid visible handicap card or a handicap license plate. Temporary cards are available from Renee.



Summer Session Memories



English Country Dance with Carol West as the caller.



Fun, food and art in Painting Interactive Workshop



Fun and good food at Kitchen Kapers XIX



Photos by Dolores Fiegel and Jay Wheeler.